

FAST EDDIE®

AUTHENTIC APPAREL >>>

FALL/WINTER APPAREL & ACCESSORIES



2023 2024

FASTEDDIEAUTHENTICAPPAREL.COM

1-800-383-4940 · 905-642-1010

Fast Eddie Authentic Apparel is a Canadian owned company in our **21st year of designing and manufacturing apparel and accessories** for every market ranging from motorsports to construction to transportation to health care and LITERALLY, everything in between. We pride ourselves on our versatility and are able to offer marketing solutions for anything that comes our way.

In a fast-moving industry it's important to set yourself apart and it's our **unique designs and innovative products** that set us apart from the other guys. Our fully vertical operation and **in-house art department** allows us to control all aspects of your company or team needs and create branding solutions that fits your concepts and your budget.

At Fast Eddie you only get **high quality products**, designed and manufactured by our team with 100% unique designs on products such as **custom T-shirts, jackets, fleece, hoodies, hats, headwear**, and anything else you can come up with. If we don't have it, we'll find someone who does!

Our staff are professionals who live the industry and are **passionate about what we do** and we listen to your needs and deliver them on time - isn't that what we all want these days?

And the best part is, because we control all of the manufacturing from concept to finished product, we also eliminate all those additional costs along the way. The end result is superior product at an affordable price and that combination is what makes Fast Eddie Authentic Apparel your one-stop shop for any and all of our clothing and accessory needs in Canada!

Give us a call and...

GET Geared UP!



CUSTOM

FAST EDDIE[®]
AUTHENTIC APPAREL >>>

CUSTOM PRINTED TEES



CUSTOM

CUSTOM SUBLIMATED CREW SHIRTS

MADE IN CANADA



CUSTOM

CUSTOM

SUBLIMATED HOODIES / TEES / JACKETS

MADE IN
CANADA



CUSTOM

CUSTOM PRINTED HOODIES / CREW NECKS



CUSTOM

CUSTOM HATS & ACCESSORIES



LANYARDS



TECH GLOVES



ARM SLEEVES



SLIPPERS



MINI STICKS



KOOZIES



Side Front

SPORT SOCKS



GOLF TOWEL

**MORE ACCESSORIES
AVAILABLE**

**CALL 1-800-383-4940
FOR DETAILS**

CUSTOM

NEW SILVER FAUX FUR!

NORTH TREKK PARKAS

- 3/4 length
- Water resistant & breathable shell
- Double storm flap
- Adjustable, removable, silver faux fur lined hood (fur removable)

BG01-4197 | LADIES
BLACK/SILVER | XS-2XL

BG01-4198 | MEN'S
BLACK/SILVER | S-3XL

NEW

FLATTERING FIT

7 Thinsulate ^{500g} Polyester fill

REMOVABLE FUR

NEW

REGULAR FIT

7 Thinsulate ^{500g} Polyester fill

REMOVABLE FUR



BG01-4197



BG01-4198

INTERIOR



INTERIOR



CLEAN. MODERN LINES.

SURGE TEK 2.0 JACKETS

- 94% Polyester/6% Spandex, three-layer bonded waterproof/breathable shell
- Heat retention lining
- Reflective accents & decoration
- Interior storm flap

BG01-4225 | MEN'S CHARCOAL/BLACK/RED | S-3XL

BG01-4224 | LADIES CHARCOAL/BLACK/LAVENDER | S-2XL

BG01-4227 | MEN'S CHARCOAL/BLACK/REFLECTIVE | S-3XL

BG01-4226 | MEN'S CHARCOAL/BLACK/ORANGE | S-3XL

BG01-4222 | LADIES CHARCOAL/BLACK/ORANGE | S-2XL



BG01-4225



REGULAR FIT



BG01-4224



FLATTERING FIT



BG01-4227
REGULAR FIT



BG01-4226
REGULAR FIT



BG01-4222
FLATTERING FIT



JACKETS

SERIOUS WINTER JACKET!

NORTHERN SUMMIT JACKETS

- 100% Polyester
- Wind & water resistant
- 8.8 oz. insulation in main upper body
- 9.8 oz. in back
- Quilted lining

- BG01-4218 | MEN'S | BLACK/RED | S-3XL
- BG01-4221 | LADIES | BLACK/SILVER | S-2XL
- BG01-4219 | MEN'S | BLACK/CHARCOAL | S-3XL
- BG01-4220 | LADIES | BLACK/WARM PINK | S-2XL

NEW

REGULAR FIT



BG01-4218

NEW

FLATTERING FIT



BG01-4221



BG01-4219
REGULAR FIT



BG01-4220
FLATTERING FIT



NEW

NEW



JACKETS

ULTRALIGHT WARM MID-WEIGHT

COMPETE PUFFER JACKETS

- 100% Nylon body
- 100% Polyester insulation
- Wind & water resistant
- Silver heat retention lining
- Two zippered lower pockets

BG01-4111 | MEN'S
BLACK | S-3XL

BG01-4112 | LADIES
BLACK | S-2XL

NEW

REGULAR
FIT



NEW

FLATTERING
FIT

FIXED,
ADJUSTABLE
HOOD

3/4 LENGTH

BG01-4111

BG01-4112

INTERIOR



INTERIOR



JACKETS

DRESS THE ENTIRE FAMILY



BG01-4097

BG01-4096

BG01-4088

BG01-4016



REGULAR FIT

BG01-4017

ARCTIC PEAK JACKETS

- Water resistant/ breathable shell
- 6 oz. Polyester insulation
- Quilted lining
- Hidden inner knit cuff
- Knit lined collar
- Adjustable bottom hem
- Three exterior zippered pockets
- Adjustable, removable hood

BG01-4097 | KIDS/YOUTH

BLACK/CHARCOAL MELANGE/SILVER | S (5-6YRS), M (7-8YRS), L (9-10YRS)

BG01-4096 | KIDS/YOUTH

BLACK/CHARCOAL MELANGE/PINK | S (5-6YRS), M (7-8YRS), L (9-10YRS)

BG01-4088 | LADIES

BLACK/BLACK MIX/TURQUOISE W/TURQUOISE PULLERS | S-2XL

BG01-4016 | MEN'S

BLACK/BLACK MELANGE/SILVER W/SILVER PULLERS | S-3XL

BG01-4017 | MEN'S

BLACK/BLACK MELANGE/ORANGE | S-3XL



REGULAR
FIT

REGULAR
FIT

SAWBUCK SHERPA VESTS

- 100% Cotton canvas shell
- Breathable & water resistant
- Sherpa lined
- Corduroy Collar
- Open bottom with drop tail & side vents

BG00-1072 | BLACK/CHARCOAL | S-3XL | MEN'S

ESSENTIAL QUILTED VEST 2.0

- 100% Polyester quilted shell
- Knit collar
- 2 oz. insulation

BG00-1076 | BLACK | S-3XL | MEN'S

BG00-1072

BG00-1076

LADIES 3/4 PUFF VESTS

- Polyester quilted shell
- 2 oz. insulation, fully lined
- Two side seam zippers on hips for ease of movement
- Attached hood
- Drop tail
- YKK center front zipper
- Flattering fit

BG00-1074 | BLACK | S-2XL | LADIES

BG00-1075 | BLACK/WHITE | S-2XL | LADIES

FLATTERING
FIT

FLATTERING
FIT



BG00-1074

BG00-1075

FASHION MEETS COMFORT

VESTS



REGULAR FIT

NEW

BG01-4202



REGULAR FIT

NEW

BG01-4203

878 WINTER JACKETS

- 100% Polyester water resistant & breathable shell
 - 7.8 oz. Polyester insulation
 - Interior center spine & collar lined with warm borg
 - One interior security pocket
 - Reflective print on front, back body and sleeve
 - YKK center front zipper
- BG01-4202** | BLACK/CHARCOAL | S-3XL
BG01-4203 | BLACK/ORANGE | S-3XL



REGULAR FIT

ACTION PLEATS

BG01-4114



REGULAR FIT

BG01-4098



REGULAR FIT

BG01-4094

SAWBUCK 24/7 QUILTED JACKET

- 100% Polyester shell
 - 3 oz. Polyester fill
 - Shoulder "Action Pleats"
- BG01-4114** | BLACK/SILVER | S-3XL | MEN'S

SAWBUCK SHERPA JACKET

- 100% Cotton canvas shell
 - Breathable & water resistant
 - Sherpa lined - Corduroy Collar
 - Open bottom with drop tail & side vents
- BG01-4098** | BLACK/CHARCOAL | S-3XL | MEN'S

BUILDER JACKET

- 100% Polyester Oxford with waterproof/breathable coating
 - Quilted Micro-fleece interior
 - Reflective taping for visibility
 - One snap-closure chest pocket, two lower pouch pockets with dual access
 - 3/4 Length
 - Polyester insulation, 7.8 oz. in the body, 6.4 oz. in the sleeve
- BG01-4094** | BLACK/RED/REFLECTIVE | S-3XL | MEN'S

JACKETS/VESTS

BUILT FOR THE TOUGHEST JOBS



INSIDE

FLATTERING FIT



INSIDE

FLATTERING FIT



BG01-4063



BG01-4064

FLATTERING FIT

FLATTERING FIT



BG01-3896



BG01-4065

LADIES EQUALIZER JACKETS

- 100% Polyester, bonded soft shell sleeves & side panels
- 100% Polyester, lined & quilted panels
- Reflective YKK center front zipper & pullers
- Three exterior zippered pockets
- Adjustable bottom hem

BG01-4063

- BLACK/BLACK MIX/MULBERRY | S-2XL | LADIES

BG01-4064

- BLACK/BLACK MIX/DARK TEAL | S-2XL | LADIES

BG01-3896

- BLACK/BLACK MIX/MINT | S-L, 2XL | LADIES

BG01-4065

- BLACK/BLACK MIX/BLACK | S-2XL | LADIES

REGULAR
FIT

FLATTERING
FIT

BG01-4167

BG01-4170

REGULAR
FIT

FLATTERING
FIT

BG01-4168

BG01-4169

BG01-4172

MEN'S & LADIES SUPER CHARGED JACKETS

- Breathable, water-repellent & windproof jacket
- YKK center front zipper
- Fixed & adjustable hood

BG01-4167

- BLACK/RED | S-3XL | MEN'S

BG01-4170

- BLACK/BURNT CORAL | S-2XL | LADIES

BG01-4168

- BLACK/ORANGE | S-3XL | MEN'S

BG01-4169

- BLACK/SILVER | S-3XL | MEN'S

BG01-4172

- BLACK/SILVER | S-2XL | LADIES

LADIES NORTHERN LIGHTS JACKET

- 100% Polyester
- Adjustable cuffs & bottom hem
- Four exterior pockets
- Back slit for ease of movement
- 3/4 body length
- Interior storm flap
- Tricot lined collar & chin protector
- Fully lined
- Lined, adjustable, removable hood
- Two-way zipper
- Embossed printed lining

BG01-3734 | CHARCOAL MELANGE | S-L, 2XL



BG01-3734



REGULAR
FIT

WATERPROOF

BG01-4163



REGULAR
FIT

WATERPROOF

BG01-4164



FLATTERING
FIT

WATERPROOF

BG01-4165

MEN'S & LADIES RAIN ARMOUR WATERPROOF JACKETS

- Superior seam sealed, waterproof breathable shell
- Waterproof center front zipper
- Fixed, adjustable hood & bottom hem

BG01-4163 | BLACK | S-3XL | MEN'S

BG01-4164 | CHARCOAL | S-3XL | MEN'S

BG01-4165 | CORAL PINK | XS-2XL | LADIES

BG01-4184 | CHARCOAL | XS-2XL | LADIES



FLATTERING
FIT

WATERPROOF

BG01-4184



BG01-3821

REGULAR FIT



BG01-4018

REGULAR FIT



AVIATOR LEATHER BOMBER JACKET

- 100% Genuine Leather
 - Two lower zippered pockets
 - Removable wool facing
 - Rib bottom hem & sleeve cuff
 - One upper chest zippered pocket
 - YKK metal center front zipper
 - Top quality quilted lining with 2 oz. Polyester fill
 - One interior welt pocket with button closure
 - One interior zippered security pocket
- BG01-3821 | BLACK | S-2XL**

ELITE MELTON LEATHER JACKET

- 100% Genuine drum dyed Leather
 - 48% Wool/52% Polyester Melton shell material
 - 7 oz. Polyester insulation
 - Knit collar, bottom hem & cuffs
 - Snap closure front
 - Two leather trimmed welt pockets
 - Two interior pockets
- BG01-4018 | BLACK/WHITE/BLACK | M-2XL**



BG01-3811

REGULAR FIT



BG01-3705

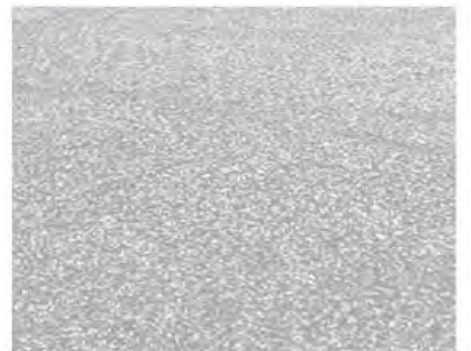
REGULAR FIT

LEGACY M.M LEATHER JACKET

- 100% "Man-made" Leather
 - Garment wash effect
 - Black speed stripes
 - Fully lined
 - 4 exterior pockets
 - 1 interior welt pocket
 - 1 interior security pocket
- BG01-3811 | BROWN/BLACK | S-M**

SUEDED DESPERADO JACKET

- 100% M.M Leather with heavy wash finish
 - Fully lined with Taffeta
 - Six exterior pockets
 - Decorative contrast stitch
 - One interior welt pocket
 - 2 oz. Poly fill in the body & sleeves
- BG01-3705 | WASHED KHAKI | S-2XL**





REGULAR FIT

BG01-3755



BG01-3756



REGULAR FIT

BG01-3873

MEN'S VORTEX JACKETS

- Main body 100% Polyester with 95% Polyester/5% Spandex body accents
- Bonded with anti-pill fleece
- Two zippered pockets
- Inner cell phone security pocket
- Reflective accents on front & back
- Bar tacked stress points for extra durability

BG01-3755 | BLACK/BLACK MIX/BLUE | S-3XL | MEN'S
 BG01-3873 | BLACK/BLACK MIX/SILVER | S-3XL | MEN'S

BG01-3756 | CHARCOAL/BLACK/RED | S-3XL | MEN'S



REGULAR FIT

BG01-3855



BG01-3863



MEN'S ENDURANCE JACKETS

- 100% bonded Polyester shell with micro fleece backing
- Three exterior zippered pockets
- Embossed upper storm flap
- Adjustable bottom hem
- Open cuff
- Adjustable hood

BG01-3855
 - CHARCOAL MIX/RED | S-3XL | MEN'S
 BG01-3863
 - CHARCOAL MIX/SILVER | S-3XL | MEN'S



BG01-4066



BG01-4069

**MEN'S & LADIES
HIGH SPEED JACKETS**

- 70% Nylon/30% Polyester mélange shell fabric
- 100% Polyester black fabric
- Two exterior zipper pockets
- Jersey & mesh lined
- Adjustable bottom hem
- Adjustable, rollaway hood with contrast coloured elastic
- YKK center front zipper
- Open cuff

- BG01-4066**
CHARCOAL MIX/BLACK/SILVER | M-XL | MEN'S
- BG01-4069**
CHARCOAL MIX/BLACK/PINK | S-2XL | LADIES
- BG01-4067**
CHARCOAL MIX/BLACK/RED | M-3XL | MEN'S
- BG01-4070**
CHARCOAL MIX/BLACK/SILVER | S-XL | LADIES

REGULAR
FIT



BG01-4067

FLATTERING
FIT



BG01-4070



REGULAR
FIT

BG01-3645



FLATTERING
FIT

BG01-3646



BG01-3788

REGULAR
FIT

BG01-4126

BG01-4125

ULTIMATE DEALER JACKETS

MEN'S & LADIES PRECISION JACKETS

- 100% Polyester soft shell
- Breathable
- Wind & water resistant
- Fleece lined collar
- Two exterior zippered pockets
- Adjustable Velcro cuffs
- Triple layer bonded with fleece lining & stretch
- Adjustable bottom hem with drawstring/toggles

BG01-3645	BLACK	S-3XL	MEN'S
BG01-3646	BLACK	S-2XL	LADIES
BG01-3788	AZURE BLUE	S-3XL	MEN'S
BG01-4126	BLACK/RED	S-M, XL-3XL	MEN'S
BG01-4125	BLACK/WHITE	M-3XL	MEN'S

JACKETS

MEN'S HOODED LETHAL JACKETS

- 100% Polyester bonded fabric
- Reflective center front zipper
- Scuba collar
- Anti-pill
- Adjustable hood
- Two lower zippered pockets
- One reflective zippered upper chest pocket
- Bar tacked stress points for extra durability
- Adjustable bottom hem
- Inner storm flap with chin protector

BG01-4082

- BLACK/CHARCOAL/SILVER | S-M,XL-3XL | MEN'S

BG01-4081

- BLACK/CHARCOAL/RED | S-3XL | MEN'S



BG01-4082



BG01-4081

LADIES REV'D UP JACKET

- 70% Nylon/30% Polyester textured shell fabric
- Reflective centre front zipper
- Rollaway hood
- Adjustable bottom hem
- Mesh & Jersey lined interior

BG01-3909

CHARCOAL MIX/BLACK/SILVER
S-2XL | LADIES



FLATTERING FIT

BG01-3909

REGULAR FIT

REGULAR FIT



BG01-3995



BG01-3994

WARM UP JACKETS

- 100% Polyester, lightweight shell
- Hood with thick drawcord
- Wind & water resistant
- Zippered pockets
- YKK center front zipper

BG01-3995

- BLACK/CHARCOAL/SILVER | S-M,XL-3XL | MEN'S

BG01-3994

- BLACK/CHARCOAL/ORANGE | S-M,XL-3XL | MEN'S



REGULAR
FIT

REGULAR
FIT

MEN'S PURSUIT JACKET

- Black quilted fabric is 100% Nylon
- Knit melange fabric is 100% Polyester
- 100% Polyester lining
- Thick knit inner collar
- Reflective taping at front side seams
- Adjustable, attached hood
- Two exterior zippered pockets
- Adjustable bottom hem
- Knit sport thumb cuff

BG01-3921 | BLACK/BLACK MIX | M-XL | MEN'S

MEN'S UNITY FLIGHT JACKETS

- 100% Nylon shell
- Durable satin lining
- 2 oz. Polyester insulation
- Metal zippers
- Knit collar, cuffs & bottom hem
- Two exterior pockets with snap closure
- Two interior welt pockets
- Left sleeve utility/pen pocket

BG01-3958 | BLACK/ORANGE | M-3XL

BG01-3960 | BLACK/BLUE | L-2XL

REGULAR
FIT



BG01-3921



BG01-3958



BG01-3960

MEN'S HIGH FREQUENCY JACKETS

- 100% Polyester bonded fabric
- Adjustable hood
- Elasticised trim on cuffs
- Inner front storm flap
- YKK center front zipper
- Chin protector
- Two exterior lower zippered pockets
- Upper chest, zippered media pocket
- Open bottom hem with twill trim
- Underarm grommets for breathability

BG01-3692 | GREY MELANGE/BLACK W/ RED | S-3XL

BG01-3710 | GREY MELANGE/BLACK W/ ORANGE | M-2XL

REGULAR
FIT

REGULAR
FIT



BG01-3692

BG01-3710



JACKETS

REGULAR FIT

NEW



BG01-4238

REGULAR FIT

NEW



BG01-4237

REGULAR FIT

NEW



BG01-4191

REGULAR FIT



BG01-4188

NEW



FLATTERING FIT

BG01-4232

NEW



REGULAR FIT

BG01-4127

NEW



FLATTERING FIT

BG01-4240

NEW



KIDS/YOUTH FIT

BG01-4235

NEW



BG01-4129

MEN'S, LADIES & KID'S PINWOOD SPORT JACKETS

- 100% Polyester bonded fleece with plaid print
- Three exterior zippered pockets
- Attached fleece hood with drawcords
- YKK center front reflective zipper

BG01-4238 | LIGHT GREY/BLACK/RED | S-3XL | MEN'S
 BG01-4237 | LIGHT GREY/BLACK/ORANGE | S-3XL | MEN'S
 BG01-4191 | ORANGE/BLACK/GREY | S-3XL | MEN'S
 BG01-4188 | BLUE/BLACK/GREY | M-2XL | MEN'S
 BG01-4232 | PINK/PINK | S-2XL | LADIES
 BG01-4127 | RED/BLACK/GREY | S-3XL | MEN'S
 BG01-4240 | DOUBLE BLUSH | S-2XL | LADIES
 BG01-4235 | PINK/PINK
 XS (4-5), S (6-7), M (8-10) | KIDS/YOUTH
 BG01-4129 | RED/BLACK/GREY
 XS (4-5), S (6-7), M (8-10) | KIDS/YOUTH

REGULAR
FIT



BG01-4139

REGULAR
FIT



BG01-4185

FLATTERING
FIT



BG01-4187

FLATTERING
FIT



BG01-4186

NEW



REGULAR
FIT

BG01-4239

NEW



FLATTERING
FIT

BG01-4241

NEW



REGULAR
FIT

BG01-4236

FLATTERING
FIT



BG01-4189

MEN'S, LADIES & KID'S PINWOOD SPORT JACKETS

- 100% Polyester bonded fleece with plaid print
- Three exterior zippered pockets
- Attached fleece hood with drawcords
- YKK center front reflective zipper

BG01-4139 | LIGHT GREY/BLACK/BLACK | S-3XL | MEN'S

BG01-4185 | SAND/BLACK/GREY | M-3XL | MEN'S

BG01-4187 | LIGHT GREY/BLACK/BLACK | S-L | LADIES

BG01-4186 | SAND/BLACK/GREY | S-2XL | LADIES

BG01-4239 | DENIM/BLACK | S-3XL | MEN'S

BG01-4241 | DOUBLE DENIM | S-2XL | LADIES

BG01-4236 | GREEN/BEIGE CAMO | S-3XL | MEN'S

BG01-4189 | LAVENDER PLAID/GREY | S-2XL | LADIES

BG01-4132 | WHITE/BLACK/GREY

XS (4-5), S (6-7), M (8-10) | KIDS/YOUTH

BG01-4140 | LIGHT GREY/BLACK/BLACK

XS (4-5), S (6-7), M (8-10) | KIDS/YOUTH



KIDS/YOUTH
FIT

BG01-4132

BG01-4140

JACKETS

REGULAR
FIT



BG01-4154

FLATTERING
FIT



BG01-4149

FLATTERING
FIT



BG01-4155

REGULAR
FIT



BG01-4145

FLATTERING
FIT



BG01-4146

FLATTERING
FIT



BG01-4152



BG01-4150



BG01-4153

KIDS/YOUTH
FIT

MEN'S, LADIES & KID'S POWERED UP FLEECE JACKETS

- 100% Polyester bonded, textured fabric
- Mid-weight full zip fleece - Anti-pill
- Two lower zippered pockets
- Bar tacked stress points for extra durability
- Hood with vibrant coloured taping
- Vibrant coloured drawcord with silicone covered tips
- YKK Vislon® center front zipper

BG01-4154 | ONYX/CARBON/ORANGE | S-3XL | MEN'S

BG01-4149 | ONYX/RED | S-2XL | LADIES

BG01-4155 | ONYX/CARBON/ORANGE | S-2XL | LADIES

BG01-4145 | CARBON/FOREST GREEN | S-3XL | MEN'S

BG01-4146 | CARBON/FOREST GREEN | S-2XL | LADIES

BG01-4152 | ONYX/CARBON/SILVER | S-2XL | LADIES

BG01-4150 | ONYX/RED | XS (4-5), S (6-7), M (8-10) | KIDS/YOUTH

BG01-4153 | ONYX/CARBON/SILVER | XS (4-5), S (6-7), M (8-10) | KIDS/YOUTH

MICRO FLEECE FOR WARMTH

MEN'S & LADIES TRAIL COUNTRY JACKETS

- Melange fleece bonded with micro fleece
- TPU lamination
- YKK Metaluxe® center front zipper

BG01-4194 | GREY MIX/SILVER | S-3XL | MEN'S
BG01-4195 | LAVENDER/SILVER | S-2XL | LADIES
BG01-4134 | ORANGE/CHARCOAL | S-3XL | MEN'S
BG01-4136 | ORANGE/SILVER | S-2XL | LADIES



LADIES TRAIL SIDE SHERPA JACKETS

- Melange fleece bonded with Sherpa
 - TPU lamination
 - Flattering fit
- BG01-3998** | MINT | S-2XL
BG01-3955 | MULBERRY MIX | S-L



JACKETS



TRAIL HYBRID JACKETS

- Mélange fleece bonded with micro-fleece
- Breathable, water-repellent & windproof jacket
- TPU lamination - Two exterior pockets lined with micro-fleece
- Knit rib cuffs & bottom hem
- Attached, adjustable hood
- YKK Metaluxe® center front zipper

- BG01-4229 MEN'S**
BLACK/BLACK/RED | S-3XL
- BG01-4231 LADIES**
BLACK/BLACK/VERY BERRY | S-2XL
- BG01-4228 MEN'S**
BLACK/BLACK/CHARCOAL | S-3XL
- BG01-4230 LADIES**
BLACK/BLACK/TEAL | S-2XL



FABRIC DETAIL



BG01-4229

BG01-4231

BG01-4228

BG01-4230



MEN'S R.XTREME JACKET

- 96% Polyester/4% sp&ex bonded with 100% fleece waterproof/breathable 3-layer soft shell
- Tricot & wipeable material at collar for comfort & easy care
- Adjustable bottom hem with drawstring/toggles
- Contrast mesh inside lining

BG01-3846 | BLACK/ROYAL BLUE/WHITE | S-2XL



MEN'S INTENSITY JACKET

- 100% Polyester
- Wind & water resistant
- Fully lined
- Adjustable cuffs
- Back vent
- Reflective accents
- Comfort fit bottom hem
- YKK center front zipper
- Three exterior zippered pockets

BG01-3979 | ROYAL/NAVY BLUE/ORANGE | S-2XL

BG01-3846

BG01-3979



**FLATTERING
FIT**

BG01-4060



**LADIES GRACE
LIGHTWEIGHT JACKET**

- 95% Polyester/5% Spandex
- 8 oz.
- Tricot lined, zippered pockets
- Silver metallic zippers
- Flattering fit

BG01-4060 | TEAL MIX | S-2XL



**FLATTERING
FIT**

BG01-3945



**REGULAR
FIT**

BG01-3778

LADIES UNSTOPPABLE JACKET

- Main body 100% Polyester
- Lined with anti-pill fleece
- Soft grid-like texture
- Chrome tipped zipper pullers
- Adjustable bottom hem
- Two exterior zippered pockets
- Bar tacked stress points for extra durability

BG01-3945 | BLACK | M-2XL

MEN'S BLAZE JACKET BY EGO

- 66% Polyester/28% Rayon/6% Sp&ex bonded shell
- Attached, adjustable hood
- Waterproof center front zipper for a sleek look
- Modern, zippered Kangaroo style pockets
- Taped neck seam
- Rubber print along raglan seam

BG01-3778 | GREY/CHARCOAL/WHITE | S-3XL



JACKETS

SAWBUCK HOODED SHACKET

- 60% Cotton/40% Polyester
- Snap up center front
- Jersey lined
- Fixed, adjustable fleece hood

BG02-4697 | UNISEX

BLACK/CHARCOAL/WHITE | XS-3XL



UNISEX FIT



BG02-4697

ANTIGUA SPIKES 1/4 ZIP PULLOVER HOODIES

- Brushed 88% Polyester/12% Spandex® contrast slub fabric - Fixed hood with adjustable drawcords - 1/4 Zip w/chin protector

BG02-4715 | ROCK HEATHER | S-2XL

BG02-4716 | BLACK HEATHER | S-2XL

BG02-4717 | ROCK HEATHER | S-2XL



REGULAR FIT

BG02-4715



REGULAR FIT

BG02-4716



REGULAR FIT

BG02-4717

FLEECE

SAWBUCK 1/4 ZIP JOB FLEECE

- 60% Cotton/40% Polyester
- 1/4 Zip
- 10.3 oz. pre-shrunk fleece
- Sport collar
- Right upper chest pocket
- Anti-pill

**BG02-4673 | MEN'S
BLACK/CHARCOAL | S-3XL**

**REGULAR
FIT**



BG02-4673

LADIES HIGH PEAK PULLOVER HOODIES

- 60% Cotton/40% Polyester - Brushed fleece
- 10.3 oz. pre-shrunk fleece - Rib knit hood

**BG02-4693 | SPORT MELANGE | XS-2XL
BG02-4674 | LIGHT PINK | XS-2XL**

**FLATTERING
FIT**



BG02-4693

**FLATTERING
FIT**



BG02-4674

MEN'S & LADIES CHARGED 1/2 ZIP HOODIES

- 70% Cotton/30% Polyester
- Mid-weight 9.14 oz. pre-shrunk fleece
- Hood with scuba collar

BG02-4646 | MILITARY GREEN | S-3XL | MEN'S
BG02-4644 | CHARCOAL | S-3XL | MEN'S
BG02-4647 | MILITARY GREEN | M, L | LADIES
BG02-4645 | CHARCOAL | S-3XL | LADIES



CHARGED



RELAXED
FIT

BG02-4649

UNISEX ESSENTIAL RIBBED HOODIE

- 96% Polyester/4% Sp&ex
- 13.68 oz.
- Fixed hood

BG02-4649 | CARBON | XS-3XL | UNISEX



UNISEX FIT

BG02-4654

CAMO FULL ZIP HOODIE

- 60% Cotton/40% Polyester
- Brushed fleece
- Custom, sublimated camo print

BG02-4654 | BLACK/CHARCOAL/GREY | M-XL | UNISEX



FLATTERING
FIT

BG02-3649

LADIES VARSITY FORCE FLEECE

- 15 oz. Pull Over Fleece - 95% Cotton/ 5% Polyester
- Two tone double layered contrast hood & drawstrings
- Rib cuff & hem with Lycra - Pouch pocket

BG02-3649 | LADIES
SOLID CHARCOAL/SOLID BLACK | S, M, 2XL



RELAXED,
UNISEX FIT

BG02-4656

UNISEX ACTION FULL ZIP HOODIE

- 60% Cotton/40% Polyester
- Brushed fleece
- 10.3 oz. pre-shrunk fleece

BG02-4656 | CHARCOAL MELANGE | XS-3XL | UNISEX

FLEECE

UNISEX MOTION PULLOVER HOODIE

- 60% Cotton/40% Polyester

- Brushed fleece

- 10.3 oz. pre-shrunk fleece

BG02-4660 | BLACK | S-3XL

BG02-4712 | ORANGE | S-3XL

BG02-4664 | LIGHT PURPLE | S-2XL

BG02-4659 | CARDINAL RED | S-3XL

BG02-4661 | CHARCOAL | S-3XL

BG02-4662 | TOUGH TAN | S-3XL

BG02-4663 | HOT PINK | S-2XL

BACK TO BASICS



LADIES & MEN'S SHIELD VARSITY FLEECE

- 15 oz. pullover fleece - 95% Cotton/5% Polyester
- Rib cuff & hem with Lycra

BG02-4571 | LADIES | CHARCOAL MIX/BLACK/TEAL MIX | S-2XL

BG02-4568 | MEN'S | CHARCOAL MIX/BLACK/RED | S-3XL

BG02-4611 | MEN'S | CHARCOAL MIX/BLACK/GREY | S-3XL

BG02-4609 | LADIES | CHARCOAL MIX/BLACK/PURPLE MIX | S-2XL

BG02-4569 | MEN'S | CHARCOAL MIX/BLACK/BLUE MIX | S-3XL



MADE IN CANADA



MEN'S VICTORY FLEECE

- 15 oz. pullover fleece
- 95% Cotton/5% Polyester
- Two tone double layered contrast hood with drawstrings
- Rib cuff & hem with Lycra
- Pouch pocket

BG02-4040 | BLACK/RED | S-2XL | MEN'S

BG02-4042 | BLACK/LIME | M-3XL | MEN'S



FLEECE

CHEVRON VARSITY FLEECE

- 15 oz. pullover fleece
- 95% Cotton/5% Polyester
- Two tone double layered contrast hood with drawstrings
- Rib cuff & hem with Lycra
- Pouch pocket

BG02-4506 | BLACK/CHARCOAL | S-3XL | MEN'S
BG02-4496 | BLACK/LIME GREEN | S-M,XL-2XL | MEN'S
BG02-4497 | BLACK/RED | M, XL-2XL | MEN'S
BG02-4507 | BLACK/HOT ORANGE | S-3XL | MEN'S

**MADE IN
CANADA**



BG02-4506

RELAXED,
FIT



RELAXED,
FIT

BG02-4496



RELAXED,
FIT

BG02-4497



RELAXED,
FIT

BG02-4507

MADE FOR COMFORT!



REGULAR
FIT

BG02-4455



FLATTERING
FIT

BG02-4476



REGULAR
FIT

BG02-4445



FLATTERING
FIT

BG02-4602

SHADE 1/2 ZIP FLEECE

- 100% Polyester bonded anti-pill fabric
- Large zippered security pocket
- Knit cuffs & waistband for superior comfort
- Relaxed fit

BG02-4455 | MEN'S
BLACK/CHARCOAL/RED | S-3XL

BG02-4476 | LADIES
BLACK/CHARCOAL/BURNT CORAL | S-2XL

BG02-4445 | MEN'S
BLACK/CHARCOAL/GREY | S-3XL

BG02-4602 | LADIES
BLACK/CHARCOAL/SEAFOAM | S-2XL

FLEECE

ULTRA SOFT FABRIC!



FLATTERING FIT

REGULAR FIT

BG02-4599

BG02-4598



LADIES & MEN'S DRIFT FLEECE

- 65% Polyester/ 30% Rayon/5% Elastane
- Mid-weight fleece
- 12.4 oz.
- Convertible collar
- YKK center front metal zipper

BG02-4599 | LADIES
CHARCOAL | XS-2XL
BG02-4598 | MEN'S
CHARCOAL | S-3XL



TRAILHEAD 1/2 ZIP FLEECE

- 100% polyester
 - Sherpa fabric backing
 - Right chest zippered pocket
 - 14.5oz
 - Regular fit
- BG02-4601 | MEN'S
GREY/CHARCOAL/BLACK | S-3XL

REGULAR FIT

FOR ALL CONDITIONS

UNISEX 1/4 ZIP SHERPA FLEECE

- 100% Polyester Sherpa fleece
 - 14oz
 - Two side seam pockets
 - YKK center front zipper
 - Regular fit
- BG02-4600 | UNISEX
BLACK | L-3XL



UNISEX FIT



BG02-4600

HIDE AWAY POCKET

BG02-4601

FLEECE

BG02-4058

BG02-4061



BG02-4470

UNISEX IGNITE FULL ZIP HOODIES

- 52% Cotton/48% Polyester
- Marled ring spun yarn
- Double layer hood
- Taped neck seam
- YKK antique metal matching zipper
- Brushed fleece
- Rib with Sp&ex
- Cover stitching
- Side gusset panel

BG02-4058 | GRAPHITE | M-XL, 3XL

BG02-4061 | MAROON | M-3XL

BG02-4470 | ROYAL BLUE | M-3XL

BG02-4057 | CHARCOAL | L, XL

BG02-4059 | FOREST | L-2XL



UNISEX FIT

BG02-4057



BG02-4059



REGULAR FIT

BG02-3845



BG02-3846



REGULAR FIT

BG02-4093

MEN'S VOLTAGE FULL ZIP FLEECE

- 100% Polyester full zip fleece
- Two exterior pockets
- Rib cuff & bottom hem
- Contrast insert panels
- Jersey lined adjustable hood

- Sleeve stripe detail
- Waterproof center front zipper with contrast zipper teeth
- Taffeta lined sleeve

BG02-3845 | GREY/BLACK/WHITE/SILVER | S-3XL

BG02-3846 | GREY/BLACK/WHITE/RED | M-3XL

SMOKE'D FULL ZIP FLEECE

- 100% Polyester interlock fleece
- Sublimated mid-weight 8.25 oz. fleece
- Hood with drawstring

BG02-4093 | BLACK/CHARCOAL | M-2XL

FLEECE

FLATTERING
FIT

NEW



BG02-4700

REGULAR
FIT



BG02-4090

FLATTERING
FIT



BG02-4446

NEW

FLATTERING
FIT



BG02-4641

FLATTERING
FIT



BG02-4699

MEN'S & LADIES SHIFTER FLEECE

- 80% Polyester/15% Rayon/5% Cotton
- Mid-weight 8.25 oz. pre-shrunk fleece
- Double layer hood with scuba collar
- Kangaroo pockets
- Sport cuff
- Anti-pill
- Pre-shrunk

- BG02-4700 | BLACK MELANGE | S-2XL | LADIES
- BG02-4090 | GREY | S-3XL | MEN'S
- BG02-4446 | ORANGE MELANGE | S-2XL | LADIES
- BG02-4641 | TURQUOISE MELANGE | S-2XL | LADIES
- BG02-4699 | FUCHSIA MELANGE | S-2XL | LADIES

FLEECE



BG02-4472

ESSENTIAL CREW NECK FLEECE

- Mid-weight crew neck
- 12 oz. Ring spun yarn for softness
- 100% Cotton facing, 60% Cotton/40% Polyester
- Double stitch detailing
- 1x1 Rib cuffs & bottom hem
- Taped neck seam

BG02-4472 | BLACK | S-4XL



BG02-3967

COOL KNIGHTS FULL ZIP FLEECE

- 100% Polyester shell fabric
- Full zip styling
- Lightweight for comfort & ease of movement
- Two exterior pockets
- Cover stitch detailing

BG02-3967 | GREY MIX/BLACK/WHITE | S-M, XL-3XL



BG02-4423

REGULAR FIT



BG02-4426

FLATTERING FIT



BG02-4424

REGULAR FIT

BG02-4425

INVIGORATE FULL ZIP FLEECE

- 95% Polyester/5% Elastane
- Lightweight, full zip fleece
- Adjustable hood
- Knit cuff & bottom hem
- Two exterior zippered pockets
- Two interior pockets
- Scuba collar

BG02-4423 | BLACK/GREY MELANGE/RED | M-XL | MEN'S

BG02-4426 | BLACK/GREY MELANGE/HOT PINK | S-2XL | LADIES

BG02-4424 | BLACK/GREY MELANGE/ORANGE | S, L-3XL | MEN'S

BG02-4425 | BLACK/GREY MELANGE/SILVER | M-3XL | MEN'S

REGULAR
FIT

FLATTERING
FIT



BG02-4478



BG02-4479

MEN'S & LADIES AXLE 1/4 ZIP FLEECE

- 80% Polyester/15% Rayon/5% Cotton
- Mid-weight 8.25 oz. pre-shrunk fleece
- Scuba collar
- Zippered kangaroo pockets
- Anti-pill
- 1/4 Zip

BG02-4478 | BLACK | S-3XL | MEN'S
 BG02-4479 | BLACK | S-2XL | LADIES

GEARED FULL ZIP FLEECE

- 100% Polyester fabric
- Lightweight, full zip fleece
- Reflective center front zipper
- Anti-pill
- Sport collar
- Two lower reflective zippered pockets
- One zippered upper chest pocket
- Two interior mesh pockets
- Bar tacked stress points for extra durability
- Elastic binding on bottom hem & cuffs
- Inner storm flap with chin protector

BG02-4545 | BLACK/CHARCOAL/RED | S-3XL
 BG02-4546 | BLACK/CHARCOAL/SILVER | S-3XL
 BG02-4547 | BLACK/CHARCOAL/BLUE | S-3XL

REGULAR
FIT



BG02-4545

BG02-4546

REGULAR
FIT



REGULAR
FIT



BG02-4547

ACTIVE WORKWEAR

ACTIVE OVERDRIVE 1/2 ZIPS

- 100% Polyester
- Two-Way stretch
- 1/2 Zip
- Two lower welt pockets
- Regular fit

BG02-3345 | BLACK/GREY/RED | S-3XL

BG02-3406 | BLACK/GREY/LIME | S-3XL

BG02-3405 | BLACK/GREY/GREY | S-3XL



REGULAR
FIT

BG02-3345



REGULAR
FIT

BG02-3406



BG08-0005

FLEECE TRACK PANTS

- 60% Cotton/40% Polyester
- Elasticized waist with inner drawcord
- Two front pockets
- Back right welt pocket
- Rib knit bottom cuffs

BG08-0005 | MEN'S | BLACK | S/P (28-30), M/M (32-34), L/G (36-38), XL/TG (40-42), 2XL/2TG (44-46), 3XL/3TG (48-50)



LADIES IGNITION FLEECE

- Two-way stretch Polyester shell
- Exposed coil front zipper
- Sport cuff with thumb hole
- Double needle stitch detailing
- Adjustable drawstring waist
- Flattering fit

BG02-3732 | BLACK MIX | M, L, 2XL

FLATTERING
FIT

BG02-3732

FLEECE



REGULAR FIT

MID-WEIGHT L/S HENLEY

- 86% Polyester/12% Rayon/2% Elastane
- 350 gsm
- Bottom hem side seam slit
- Self fabric cuff
- Three button placket
- Regular fit

- BG02-4548 | CHARCOAL/RED | S-3XL
- BG02-4585 | CHARCOAL/SILVER | S-3XL
- BG02-4549 | CHARCOAL/ORANGE | S-3XL
- BG02-4550 | CHARCOAL/BLUE | S-3XL



REGULAR FIT

BG02-4549



REGULAR FIT

BG02-4550

ELITE FULL ZIP FLEECE BY EGO

- 95% Polyester/5% Sp&ex full zip
- Contrast inner collar
- YKK center front contrast zipper
- Regular fit

- BG02-3928 | NAVY/SILVER | S-3XL
- BG02-3927 | BLACK/SILVER | S-3XL

REGULAR FIT



REGULAR FIT



BG02-3928



BG02-3927

FLEECE

FINE LINE PLAID L/S FLANNEL SHIRT

- 100% pre-shrunk Cotton with 2-side brushing - 4.9 oz.
- Button-up front - Two chest pockets with button closure
- Adjustable cuffs - Collar stays

BG02-4725 | BLACK/GREY/RED | XS-3XL | UNISEX
BG02-4726 | BLACK/GREY/RED | KIDS
 XS (4-5), S (6-7), M (8-9), L (10-11), XL (12-13)

UNISEX FIT

NEW

KIDS/YOUTH FIT

NEW

UNISEX BOX PLAID L/S FLANNEL SHIRT

- 100% pre-shrunk Cotton with 2-side brushing - 4.9 oz.
- Button-up front - Two chest pockets with button closure
- Adjustable cuffs - Collar stays

BG02-4729 | ORANGE/GREY/BLACK | XS-3XL
BG02-4727 | ORANGE/GREY/BLACK | KIDS
 XS (4-5), S (6-7), M (8-9), L (10-11), XL (12-13)

UNISEX FIT

NEW

KIDS/YOUTH FIT

NEW

DRESS THE WHOLE FAMILY

UNISEX PLAID FLANNEL L/S SHIRT

- 100% pre-shrunk Cotton with 2-side brushing - 4.9 oz.
- Button-up front

BG02-4636 | GREY/BLACK/CHARCOAL | XS-3XL
BG02-4637 | GREY/BLACK/CHARCOAL | XS (4-5), S (6-7), M (8-9)
BG02-4635 | RED/BLACK/CHARCOAL | XS (4-5), S (6-7), M (8-9)

UNISEX FIT

KIDS/YOUTH FIT

BG02-4636

BG02-4637

BG02-4635



REGULAR FIT

BG02-4566

OIL CAN L/S SHIRTS

- 100% pre-shrunk Cotton

- 7.1 oz.

- Button-up front

BG02-4566 | CHARCOAL/RED | S-3XL

BG02-4567 | CHARCOAL/ORANGE | S-3XL

BG02-4538 | CHARCOAL/SILVER | S-3XL

BG02-4539 | CHARCOAL/BLUE | S-3XL



BG02-4567

BG02-4538

BG02-4539

WORKFORCE L/S SHIRT

- 65% Polyester/35% Cotton

- 5.47 oz.

- Anti-wrinkle

BG02-4642 | BLACK | S-4XL

BG02-4643 | GREY | S-4XL

REGULAR FIT



BG02-4642



REGULAR FIT

BG02-4643



BG03-2109

SAWBUCK S/S FLEX SHIRT

- 59% Cotton/39% Polyester & 2% Sp&ex

- Washable suede trims

- Regular fit

BG03-2109 | CHARCOAL | S-XL

REGULAR
FIT



BG03-4026

REGULAR
FIT



BG03-4027

WORKFORCE S/S SHIRT

- 65% Polyester/35% Cotton
 - 5.47 oz
 - Two asymmetrical chest pockets with button closure
- BG03-4026 | BLACK | S-4XL
BG03-4027 | GREY | S-4XL



BG02-4094

SAWBUCK L/S FLEX SHIRT

- 59% Cotton/39% Polyester and 2% Spandex
 - Washable suede trims
 - Regular fit
- BG02-4094 | CHARCOAL | S-2XL

REGULAR
FIT



BG03-4040

TASKFORCE S/S SHIRTS

- 100% Nylon
 - 3.5 oz.
 - Water resistant
- BG03-4040 | GREY/BEIGE | S-3XL
BG03-4038 | BLUE/GREY | S-3XL

REGULAR
FIT



BG03-4038

SHIRTS + POLOS



BG03-1955



BG03-1957



BG03-2113

BRISTOL SHIRTS

- 65% Polyester/35% Cotton
- 4.5 oz.
- Two chest pockets with button closure
- Hidden button down collar
- Peach finish
- Stain Resistant

BG03-1955 | BLACK | S-L | MEN'S
BG03-1957 | WHITE | M-2XL | MEN'S
BG03-2113 | INDIGO BLUE | M-XL | MEN'S
BG02-4098 | INDIGO BLUE | L/S | S-3XL | MEN'S



REGULAR FIT



BG02-4098

PLAID ESSENTIAL S/S DRESS SHIRTS

- Pre-shrunk 100% Cotton
- Bright contrast stitching
- One chest pocket with flap & button closure
- One chest pocket with simple button closure
- Chambray trimmed inner collar, cuff & inside placket
- Soft hand feel

BG03-2087 | GREY/BLACK/RED | S-3XL
BG03-2089 | GREY/BLACK/BLUE | S-3XL



Red Stitching

REGULAR FIT

BG03-2087



Blue Stitching

BG03-2089

MEN'S H7 JASPER POLOS

- 87% Polyester/13% Spandex
- Subtle striped melange fabric
- Self fabric collar

BG03-3963 | DARK CYAN | S-3XL
 BG03-3964 | ORANGE | S-3XL
 BG03-3989 | CHARCOAL | S-3XL
 BG03-3965 | SILVER | S-3XL



REGULAR FIT



REGULAR FIT



REGULAR FIT

BG03-3963

BG03-3964



BG03-3989



BG03-3965

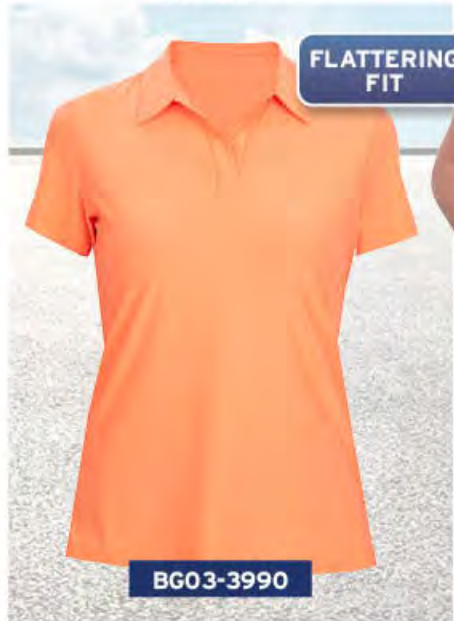
LADIES H7 JASPER POLOS

- 87% Polyester/13% Spandex
- Subtle striped melange fabric
- Self fabric collar

BG03-3990 | ORANGE | S-XL
 BG03-3988 | HOT PINK | S-2XL
 BG03-3987 | SILVER | S-2XL

FLATTERING FIT

FLATTERING FIT



FLATTERING FIT

BG03-3990



BG03-3988



BG03-3987

POLOS

LADIES & MEN'S CORE POLOS

- 100% Polyester pique
- 4.1 oz.
- Moisture wicking
- Antimicrobial
- UV Protection
- Side slits
- Knit collar

BG03-1421 | BLACK | XS-2XL | LADIES
 BG03-1925 | BLACK | S-3XL | MEN'S



BG03-1421

BG03-1925

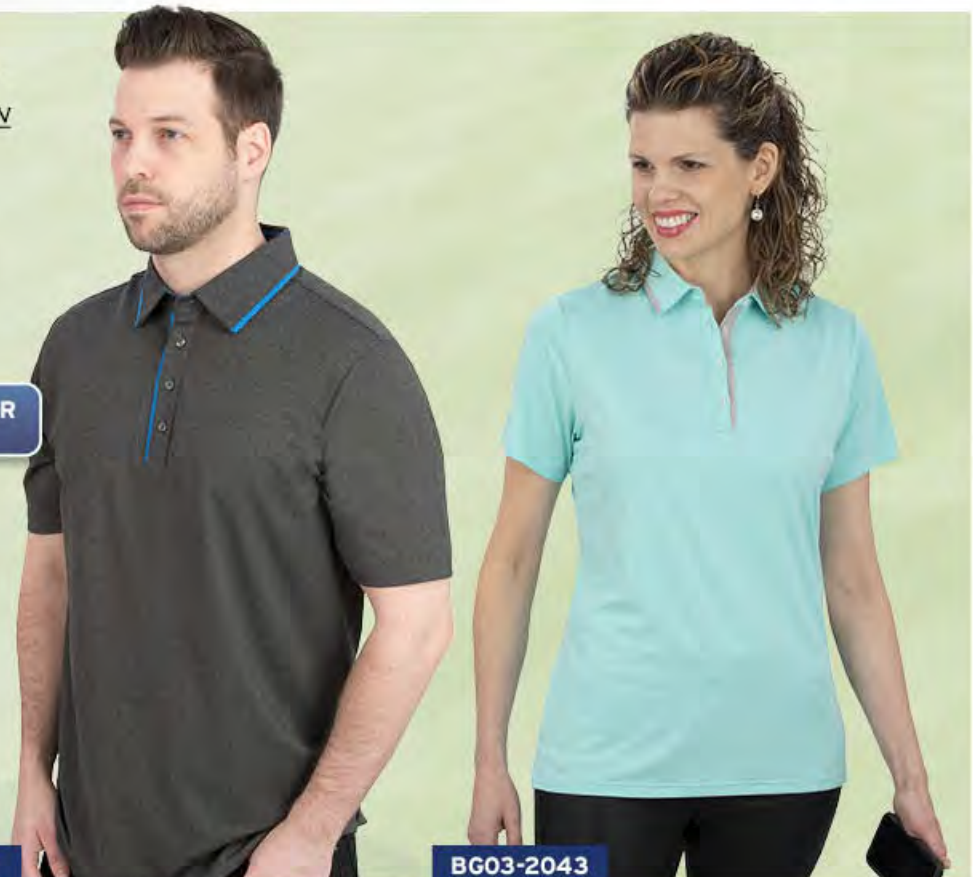
MEN'S AND LADIES H7 CYPRESS POLOS



- 93% Polyester/7% Sp&ex
- Moisture wicking
- Subtle melange fabric

BG03-1931 | CHARCOAL/BLUE | L-2XL | MEN'S
 BG03-2043 | MINT/SILVER | M-L, 2XL | LADIES

REGULAR FIT



BG03-1931

BG03-2043

COOL TECH POLOS

- 90% Polyester/10% Elastane
- "cool-down" fabric
- Rapid heat dissipation, instant cooling & air permeability
- Wick-away
- 3 Button placket

BG03-3992 | BLACK | S-2XL | LADIES
BG03-3991 | BLACK | S-3XL | MEN'S

FLATTERING
FIT

REGULAR
FIT

BG03-3992

BG03-3991

LADIES INSPIRE POLOS

- 100% Polyester with Desert Dry TM
- Embossed subtle diamond pattern
- Interlock knit
- Moisture wicking
- Self fabric collar
- Three button placket
- Side slits

BG03-3968 | WHITE | S-XL | LADIES
BG03-1938 | BLACK | S-2XL | LADIES

BG03-3966 | SMOKE | S-L | LADIES

FABRIC
DETAIL

FLATTERING
FIT

FLATTERING
FIT

FLATTERING
FIT

BG03-3968

BG03-1938

BG03-3966

ANTIGUA.



TOQUES

HERO TOQUE
BG07-6314 | TOUGH TAN
ONE SIZE FITS MOST



NEW

HERO TOQUE
BG07-6313 | BLACK
ONE SIZE FITS MOST



NEW

WORKFORCE TOQUE
BG07-6316
BLACK/CHARCOAL
ONE SIZE FITS MOST



NEW

VISION REFLECTIVE TOQUE
BG07-6317
LIGHT GREY/REFLECTIVE
ONE SIZE FITS MOST



NEW



PROMO TOQUE
BG07-2602 | BLACK/BLUE
ONE SIZE FITS MOST



PROMO TOQUE
BG07-2601 | BLACK/CHARCOAL
ONE SIZE FITS MOST



BEANIE
FB07-9892 | BLACK
ONE SIZE FITS MOST



PROMO TOQUE
BG07-2600 | BLACK/RED
ONE SIZE FITS MOST



PROMO TOQUE
BG07-2603 | BLACK/ORANGE
ONE SIZE FITS MOST



TURN UP BEANIE
BG07-2503 | BLACK
ONE SIZE FITS MOST



BACKWOODS TRAPPER
BG07-2518 | CAMO/ORANGE | ONE SIZE FITS MOST



BALACLAVA
BG07-2522 | BLACK | ONE SIZE FITS MOST



NECK WARMER
BG07-2523 | BLACK | ONE SIZE FITS MOST

Ladies Toques



SHOT ROCK TOQUE
BG07-2599 | BLACK/CHARCOAL
LADIES/YOUTH FIT | ONE SIZE FITS MOST



LADIES WORKFORCE TOQUE
BG07-6315 | PINK
LADIES/YOUTH FIT | ONE SIZE FITS MOST



LADIES DARLING TOQUE
BG07-6312 | CHARCOAL
LADIES/YOUTH FIT | ONE SIZE FITS MOST



LADIES CABIN TOQUE
BG07-2607 | BLACK | LADIES FIT
ONE SIZE FITS MOST



LADIES ZIG-ZAG BEANIE
BG07-2531 | GREY/SILVER/WHITE | LADIES FIT
ONE SIZE FITS MOST



LADIES NIGHT SKY TOQUE
BG07-2595 | BLACK | LADIES FIT
ONE SIZE FITS MOST

VELCRO BACK



VICTORY LANE CAP
 FB07-5188 | BLACK/RED/WHITE |
 VELCRO BACK



HOT ROD CAP
 FB07-5172 | BLACK/BLUE/WHITE |
 VELCRO BACK



HOT ROD CAP
 FB07-5171 | BLACK/RED/WHITE |
 VELCRO BACK



TONAL RACE CHECKERS CAP
 FB07-2363 | BLACK | VELCRO BACK



RACING CAP
 FB07-5220 | BLACK/RED/GREY |
 VELCRO BACK



RACING CAP
 FB07-5221 | BLACK/BLUE/GREY |
 VELCRO BACK



RACING CAP
 FB07-5222 | BLACK/WHITE/GREY |
 VELCRO BACK



RACING CHECK & SWOOSH CAP II
 FB07-2352 | BLACK/GREY/BLUE/WHITE |
 VELCRO BACK



WORKWEAR CAP
 FB07-5197 | BROWN/BLACK |
 VELCRO BACK



WICKING CAP
 FB07-5231 | WHITE | VELCRO BACK



BOX STRETCH CAP
 FB07-5160 | BLACK | VELCRO BACK



BOX STRETCH CAP
 FB07-5216 | CHARCOAL | VELCRO BACK



BOX STRETCH CAP
 FB07-5213 | NAVY | VELCRO BACK



BOX STRETCH CAP
 FB07-5214 | WHITE | VELCRO BACK



BOX STRETCH CAP
 FB07-5215 | ROYAL BLUE | VELCRO BACK



TOOL CRAZY MESH CAP
 CM07-3491 | BURGUNDY/BLACK |
 SURE FIT VELCRO CLOSURE

VELCRO BACK

NEW



CAMO PROMO CAP
FB07-1075 | BLACK/BACKWOODS CAMO
VELCRO BACK



WASHED 2-TONE CAMO CAP
FB07-5198 | BLACK/GREY/SILVER
VELCRO BACK



REGULAR PROFILE MESH CAP
BG07-2609 | BLACK/WHITE
VELCRO BACK



GHOST CAMO CAP
BG07-2544 | BLACK
VELCRO BACK



VINTAGE DISTRESSED CAP
BG07-2612 | GREY/BLACK
VELCRO BACK



PRESTIGE CAP
FB07-5189 | GREY/BLACK/RED
VELCRO BACK



TWILL BALL CAP
FB07-9995 | BLACK
VELCRO BACK



WOVEN CAMO CAP
BG07-2589 | WHITE/BLACK
VELCRO BACK

CLEARANCE



PIN STRIPE SKULL CAP
FB07-9966 | BLACK/GREY/RED |
VELCRO BACK

CLEARANCE



ALL PLAID CAP
FB07-2008 | BLACK/WHITE |
VELCRO BACK

CLEARANCE



PLAID CAP W/ TWILL CAP
FB07-9870 | BLACK/WHITE |
VELCRO BACK

CLEARANCE



CHAOS CAP
FB07-2499 | BLACK/RED
VELCRO BACK

BUCKLE BACK



UNSTRUCTURED LOW PROFILE CAP
BG07-2546 | WASHED KHAKI | BUCKLE BACK



UNSTRUCTURED BUCKLE BACK CAP
BG07-6307 | HARVEST ORANGE | BUCKLE BACK



UNSTRUCTURED BUCKLE BACK CAP
BG07-6304 | MIDNIGHT SLATE | BUCKLE BACK

FULL BACK

BOX STRETCH FULL BACK CAP
FB07-5161 | BLACK | FULL BACK
| ONE SIZE FITS MOST



STRETCH TWILL FULL BACK CAP
FB07-5228 | BLACK | FULL BACK
| ONE SIZE FITS MOST



MODERN FIT

SNAP BACK



FLAT PEAK CAP
FB07-5165 | BLACK/BLACK | SNAP BACK



FLAT PEAK CAP
BG07-2553 | BLACK/RED | SNAP BACK



FLAT PEAK CAP
BG07-2554 | BLACK/BLUE | SNAP BACK



FLAT PEAK CAP
BG07-2555 | BLACK/ORANGE | SNAP BACK



PERFORATED SPORT CAP
BG07-2615 | WHITE/BLACK | SNAP BACK



SHEEN CAP
FB07-5173 | BLACK/WHITE | SNAP BACK



TRUCKER MELANGE MESH CAP
FB07-5217 | GREY/WHITE | SNAP BACK



TRUCKER MESH CAP
FB07-5203 | BLACK/BLACK | SNAP BACK



TRUCKER MESH CAP
FB07-5204 | BLACK/WHITE | SNAP BACK



TRUCKER MESH CAP
FB07-5205 | GREY/BLACK | SNAP BACK

YOUTH CAPS



YOUTH MELANGE CAP
FB07-5162 | RED MELANGE/BLACK
SURE FIT VELCRO



YOUTH MELANGE CAP
FB07-5163 | BLUE MELANGE/BLACK
SURE FIT VELCRO



YOUTH MELANGE CAP
FB07-5169 | RED MELANGE/BLACK
VELCRO BACK



YOUTH MELANGE CAP
FB07-5168 | BLUE MELANGE/BLACK
VELCRO BACK



YOUTH WOVEN MESH CAP
FB07-5219
ORANGE/ORANGE/WHITE | SNAP BACK



YOUTH WOVEN MESH CAP
FB07-5218
PINK/GREY/WHITE | SNAP BACK



YOUTH WOVEN WASHED MESH CAP
FB07-5190
ORANGE/GREY/WHITE | SNAP BACK



YOUTH WOVEN WASHED MESH CAP
FB07-5194
MULBERRY/GREY/WHITE | SNAP BACK



YOUTH WOVEN WASHED MESH CAP
FB07-5233 | CHARCOAL/WHITE/RED
SNAP BACK



YOUTH WOVEN WASHED MESH CAP
FB07-5232 | CHARCOAL/GREY/LIME GREEN
SNAP BACK



YOUTH WOVEN WASHED MESH CAP
FB07-5191 | DARK GREY/WHITE
SNAP BACK



YOUTH WOVEN WASHED MESH CAP
FB07-5193 | BLUE/GREY/WHITE
SNAP BACK



YOUTH FLAT PEAK CAP
BG07-2556 | BLACK | SNAP BACK



YOUTH FLAT PEAK CAP
BG07-2557 | BLACK/RED | SNAP BACK

TODDLER

TODDLER DENIM CAP
FB07-5235
CHARCOAL/GREY
VELCRO BACK



Ladies Caps



LADIES SPORT DRAWSTRING CAP
FB07-5238 | VERY BERRY | DRAWSTRING BACK

LADIES MELANGE POLY FLEX CAP
BG07-2591 | PINK | SNAP BACK

LADIES POLY FLEX CAP
FB07-5179 | PINK MELANGE | VELCRO BACK



LADIES WICKING CRISS CROSS CAP
FB07-5199 | BLACK/DUSTY LAVENDER | SURE FIT VELCRO CLOSURE

LADIES LINEN MESH BACK CAP
FB07-2397 | GREY/WHITE/TURQUOISE | VELCRO BACK

LADIES DAISY VINE CAP
FB07-2403 | BLACK/CORAL | VELCRO BACK



LADIES LACE CAP
FB07-5187 | BLACK | VELCRO BACK

LADIES WOVEN CAMO CAP
FB07-5182 | BLACK/PINK | VELCRO BACK

LADIES ENZYME WASHED PILLBOX CAP
FB07-5175 | CHARCOAL/ROSE GOLD | VELCRO BACK

Ladies Caps



LADIES WOVEN CAMO CAP
FB07-5230 | CHARCOAL/PURPLE
SNAP BACK

LADIES SHEEN CAP
FB07-5229 | PINK/WHITE
SNAP BACK

**LADIES TIE DYE CRISS
CROSS CAP**
BG07-2611 | PEACH/BLUE/WHITE
VELCRO BACK

**LADIES SUN FADE
MESH CAP**
FB07-5195 | PINK/WHITE
VELCRO BACK



FB07-5201

FB07-1072

**LADIES MELANGE CONTRAST STITCH
MESH BACK CAP**
FB07-5201 | GREY/WHITE/PURPLE | VELCRO BACK
FB07-1072 | GREY/WHITE/PINK | VELCRO BACK

**LADIES HERITAGE
CAMO CAP**
FB07-5186 | GREY/PINK
VELCRO BACK

LADIES CAMO CAP
FB07-5206 | CAMO/GREY/PINK
VELCRO BACK



**LADIES SMOOTHIE
TWILL CAP**
FB07-5224 | PURPLE/CHARCOAL
VELCRO BACK

**LADIES SMOOTHIE TWILL
CAP**
FB07-5225 | TEAL/CHARCOAL
VELCRO BACK

**LADIES SMOOTHIE TWILL
CAP**
FB07-5226 | CORAL/CHARCOAL
VELCRO BACK

**LADIES SMOOTHIE
TWILL CAP**
FB07-5223 | PINK/CHARCOAL
VELCRO BACK

ACCESSORIES

BG09-7975

NEW



BG09-7977

NEW



BG09-7979

NEW



ALGONQUIN COOLER BAGS

- Water resistant exterior
- Lightweight closed cell insulation
- Embossed & debossed decoration
- Holds 6 cans

BG09-7975

BLACK/RED | 11" X 9" X 5 1/2" | 11PO X 9PO X 5,5PO

BG09-7977

BLACK/SILVER | 11" L X 9" W X 5 1/2" D | 11PO X 9PO X 5,5PO

BG09-7979

CHARCOAL/PINK | 11" L X 9" W X 5 1/2" D | 11PO X 9PO X 5,5PO

GOLF UMBRELLA

- Automatic push button opening & closure
- Velcro tie closure & comfortable foam handle
- Wind proof
- Lightning safe
- Can be digitally printed

BG09-7943 - BLACK/CHARCOAL - 30" WIDE CANOPY

BG09-7967

NEW



TOP VIEW

BG09-7943

EMBRACE BACKSEAT ORGANIZER

- 12 oz. Canvas
- One mesh water bottle pocket
- Large transparent plastic electronics zippered pocket
- Velcro® adjustable hanging strap with two lower clips

BG09-7967

BLACK | NOIR | 25" L X 15" W | 25PO X 15PO



ACCESSORIES

VOYAGER DUFFLE BAG

- Durable dobby fabric
- Zipper access to main compartment
- One zippered, breathable shoe storage pocket
- One exterior mesh pocket
- Two zippered front pockets
- Interior mesh zippered pocket
- Three interior open pockets with key hook
- Bottom 'feet' to keep up off of floor
- Two carrying straps
- Removable, adjustable, padded shoulder strap

BG09-4569 - BLACK/GREY/PURPLE
- 23" W X 12" H X 13" D



BG09-4569



DRIVE BACKPACK

- Nylon shell - Reflective accents
- Padded, adjustable shoulder straps
- Three zippered compartments
- Large compartment has a padded sleeve with Velcro® closure for electronic items
- Two side pockets for water bottle holders

BG09-7968 | BLACK | NOIR
18 1/2" H/ H X 13" W/L X 7 1/2" D/P



BG09-7968



21oz

BG09-7906

LOFT TRAVEL MUGS

- Vacuum sealed
 - Double-wall Stainless Steel
 - Textured paint for superior durability
 - Clear Tritan push on lid with slide opening
- BG09-7906 | MAGENTA PURPLE | 21 OZ.**



20oz

BG09-7915

TRIPLE-WALL
STAINLESS
STEEL

TRIOLOGY TIMBER MUGS

- Vacuum sealed
- Triple-wall Stainless Steel
- Quality Tritan clear plastic lid
- Faux cork base
- Keeps liquids warm or cold for over 24 hours
- Sweat resistant

BG09-7915 | LIGHT PINK/WHITE | 20 OZ.



17oz

BG09-4496

VOYAGE WATER BOTTLE

- Double-wall stainless steel construction for enhanced insulation
- Sweat resistant
- Keeps liquids warm or cold for hours
- Vacuumed sealed
- Bottle lid with handle for easy grab and go

BG09-4496 | DUSTY ROSE | 17 OZ.

OMBRE REVIVE WATER BOTTLES

- Vacuum sealed
- Double-walled Stainless Steel
- Handle for carrying
- Twist & flip top
- Triple insulated
- Keeps beverages cold/hot for hours

BG09-8026 | PURPLE/MAGENTA | 27 OZ.

BG09-8027 | BLUE/GREEN | 27 OZ.



VIVID TUMBLERS WITH STRAW - 4PK

- Single wall
- Screw on lid with straw
- PBA free
- Reusable
- Hand wash
- 4 Pack of one colour

BG09-4552 | BLUE X4 | 24 OZ.

BG09-4558 | RED X4 | 24 OZ.

BG09-4559 | CHARCOAL X4 | 24 OZ.

BG09-4560 | ORANGE X4 | 24 OZ.



