

2026 SPRING/ SUMMER CUSTOM APPAREL & ACCESSORIES COLLECTION



FAST EDDIE®
AUTHENTIC APPAREL >>>



ABOUT US



Fast Eddie Authentic Apparel is a Canadian owned company in our 25th year of designing and manufacturing apparel and accessories for every market ranging from motorsports to construction to transportation to health care and LITERALLY, everything in between. We pride ourselves on our versatility and are able to offer marketing solutions for anything that comes our way.

In a fast-moving industry it's important to set yourself apart and it's our **unique designs** and **innovative products** that set us apart from the other guys. Our fully vertical operation and in-house art department allows us to control all aspects of your company or team needs and create branding solutions that fits your concepts and your budget.

At **Fast Eddie** you only get **high quality products**, designed and manufactured by our team with 100% unique designs on products such as custom t-shirts, jackets, fleece, hoodies, hats, headwear, and anything else you can come up with. If we don't have it, we'll find someone who does!

Our staff are professionals who live the industry and are **passionate about what we do** and we listen to your needs and deliver them on time - Isn't that what we all want these days?

And the best part is, because we control all of the manufacturing from concept to finished product, we also eliminate all those additional costs along the way. The end result is superior product at an affordable price and that combination is what makes **Fast Eddie Authentic Apparel** your one-stop shop for any and all of our clothing and accessory needs in Canada!

Give us a call and...

GET GEARED UP!



CUSTOM PRINTED TEES



CUSTOM SUBLIMATED CREWSHIRTS



CUSTOM APPAREL



CUSTOM HOODIES AND JACKETS



CUSTOM HEADWEAR & ACCESSORIES



DYNAMIC STYLING, PERFORMANCE FABRIC

DEFLECT JACKETS

BG01-4318 | Men's | Black/Grey/Red | M-3XL
BG01-4329 | Men's | Black/Grey/Charcoal | S-3XL
BG01-4330 | Men's | Black/Grey/Blue | S-2XL



LADIES & MEN'S HELIX LIGHTWEIGHT JACKETS

- 100% Polyester ripstop shell
- 100% Polyester mesh lining
- Wind & water resistant
- Two lower exterior pockets

BG01-4417 | Ladies
Black/Silver | S-2XL

BG01-4416 | Men's
Black/Silver | S-3XL

BG01-4418 | Ladies
Black/Orange | S-2XL

BG01-4342 | Men's
Black/Orange | S-3XL

BG01-4341 | Men's
Black/Red | S-3XL



NEW

BG01-4417

FLATTERING
FIT



NEW

BG01-4416

REGULAR
FIT

GREAT JACKET,
EVEN BETTER
PRICE!

NEW

BG01-4418

FLATTERING
FIT



BG01-4342

REGULAR
FIT



BG01-4341

REGULAR
FIT



SAWBUCK® WORKWEAR

SAWBUCK® RIDGE TWILL JACKET

- 65% Polyester/35% Cotton workwear twill
- 100% Polyester quilted Tafetta lining
- 2 oz. insulation
- Wrinkle-resistant fabric

BG01-4335 | Men's
Charcoal | S-3XL

BG01-4335

REGULAR
FIT



SLEEVE POCKET

BG01-4315

REGULAR
FIT

SAWBUCK® DEMAND JACKET

- 100% Cotton shell
- 2 oz. 100% Polyester insulation
- Water-repellant finish

BG01-4315 | Men's
Tough Tan | S-2XL



INSIDE QUILTING

CLASSIC STYLING,
STAIN RELEASE
FINISH!

VESTS

ESSENTIAL QUILTED SNAP VEST

- 100% Polyester shell fabric
- 2 oz. Polyester insulation
- Ribbed collar
- Fully lined
- Two interior pouch pockets with Velcro® closure

BG00-1080 | Men's
Black | S-3XL

BG00-1080

REGULAR
FIT

BG00-1076

REGULAR
FIT

ESSENTIAL QUILTED VEST 2.0

- 100% Polyester quilted shell
- Knit collar
- 2 oz. insulation
- Fully lined
- Lower front kangaroo pockets
- Two interior pockets

BG00-1076 | Men's
Black | S-3XL

MEN'S & LADIES PINNACLE HYBRID JACKETS

- 100% Nylon 1.6 oz. shell fabric
- 95% Polyester/5% Spandex knit sleeve & side panels with stretch
- Chest & back panels have 2.8 oz. insulation
- Two side zippered pockets
- YKK® center front zipper

BG01-4372 | Men's
Black | S-3XL

BG01-4373 | Ladies
Black | S-2XL

NEW

BG01-4372

REGULAR
FIT

NEW

BG01-4373

FLATTERING
FIT

**BUSINESS
CASUAL
MADE EASY!**



BG01-3645

REGULAR
FIT

BG01-3646

FLATTERING
FIT



**TRIED &
TRUE**

MEN'S & LADIES PRECISION JACKETS

- 100% Polyester soft shell bonded with fleece
- Breathable
- Wind & water resistant
- Fleece lined collar
- Adjustable bottom hem with draw string/toggles
- Two exterior zippered pockets
- Two interior pockets
- Interior storm flap

BG01-3645 | Men's
Black | S-3XL

BG01-3646 | Ladies
Black | S-M, XL-2XL

BG01-4343

**REGULAR
FIT**



MEN'S REVELSTOKE LIGHTWEIGHT JACKET

- 46% Nylon/47% Polyester/7% Spandex shell fabric
- Technical stretch fabric with soft interior finish
- Wind & water resistant
- Fixed hood
- Two hidden lower zippered pockets

BG01-4343 | Men's | Charcoal | S-3XL



FABRIC DETAIL



**BE READY
FOR ANYTHING!**

LADIES EQUALIZER JACKET

- 100% Polyester, bonded soft shell sleeves & side panels
- 100% Polyester, lined & quilted panels
- Reflective YKK® center front zipper & pullers

BG01-4065 | Ladies
Black/Black Mix/Black | S-2XL

BG01-4065

**FLATTERING
FIT**



**REFLECTIVE
ACCENTS**

LADIES TRAIL HYBRID JACKETS

- Melange fleece bonded with micro-fleece
- Breathable, water-repellent & windproof jacket
- Two exterior pockets lined with micro-fleece
- Attached, adjustable hood

BG01-4231 | Ladies | Black/Black/Very Berry | S-2XL

BG01-4230 | Ladies | Black/Black/Teal | S-L, 2XL

BG01-4231

FLATTERING
FIT

BUILT TO
ENDURE



BG01-4230

FLATTERING
FIT



FABRIC DETAIL

LADIES TRAIL SIDE SHERPA JACKET

- Melange fleece bonded with Sherpa
- Two exterior pockets
- Attached hood with drawcords

BG01-3955 | Ladies | Mulberry Mix | S-L

BG01-3955

FLATTERING
FIT



FABRIC DETAIL



PINEWOOD JACKETS

MEN'S & LADIES PINEWOOD SPORT JACKETS

- 100% Polyester bonded fleece
- Three exterior zippered pockets
- Attached fleece hood with drawcords
- Adjustable bottom hem
- YKK® center front reflective zipper

BG01-4127 | Men's
Red/Black/Grey | M-L

BG01-4236 | Men's
Green/Beige Camo | S-3XL

BG01-4241 | Ladies
Double Denim | S-M



BG01-4127

REGULAR
FIT



BG01-4236

REGULAR
FIT



BG01-4241

FLATTERING
FIT

READY FOR
ADVENTURE

LADIES PINEWOOD 3/4 LENGTH SPORT JACKETS

- 100% Polyester bonded fleece
- Attached fleece hood with drawcords
- Adjustable bottom hem
- YKK® center front reflective zipper

BG01-4367 | Ladies
Blackout/Blush | S-2XL

BG01-4368 | Ladies
Blackout/Purple | S-XL



BG01-4367

FLATTERING
FIT



BG01-4368

FLATTERING
FIT

2-WAY YKK® CENTER
FRONT ZIPPER

3/4 LENGTH

3/4 LENGTH

LADIES FLEX PACKABLE JACKET

- 92% Nylon/8% Spandex waterproof shell fabric
- Athletic, lightweight & packable with 4-way stretch
- Two zippered pockets with hidden cell phone pocket
- Lower back zippered storage pocket
- Reflective accents
- Fixed, adjustable hood
- Unsurpassed breathability

BG01-4276 | Ladies
Grey | S-2XL

BG01-4276

FLATTERING
FIT



PACKABLE



INTERIOR CELL
PHONE POCKET



FABRIC DETAIL



BACK

← 4-WAY STRETCH →

WATERPROOF



MOTIVATED LIGHTWEIGHT JACKET

- 100% Polyester shell
- 92% Polyester/8% Spandex Interlock stretch panels/sleeves
- Quilted insulation on body

BG01-4307 | Men's
Black/Ghost Camo | S-3XL

BG01-4307

REGULAR
FIT

TRAIL COUNTRY JACKET

- Two exterior pockets
- Attached hood with drawcords
- Melange fleece bonded with micro fleece
- Breathable, water repellent and windproof
- TPU lamination

BG01-4194 | Men's
Grey Mix/Silver | M-2XL

BG01-4194

REGULAR
FIT



FABRIC DETAIL

MEN'S & LADIES RAIN ARMOUR 2.0 WATERPROOF JACKETS

- Waterproof/breathable shell fabric with added stretch
- 100% Polyester
- Superior seam sealed
- Fixed, adjustable hood & bottom hem
- Velcro® adjustable cuffs
- One right chest & two lower zippered pockets
- Reflective pullers
- YKK® waterproof center front zipper

BG01-4412 | Men's | Black/Orange | S-3XL

BG01-4259 | Men's | Black/Silver | S-3XL

BG01-4257 | Men's | Black/Red | S-3XL

BG01-4328 | Men's | Military Green | S-3XL

BG01-4413 | Ladies | Black/Orange | XS-2XL

BG01-4327 | Ladies | Wild Berry | XS-2XL

BG01-4258 | Ladies | Black | XS-2XL

BG01-4411 | Ladies | Lavender | XS-2XL

BG01-4410 | Men's | Navy | S-3XL

NEW

BG01-4412

REGULAR
FIT



**RAIN
ARMOUR
2.0**

BG01-4259

REGULAR
FIT



BG01-4257

REGULAR
FIT



← STRETCH →

BG01-4328

REGULAR
FIT



NEW

BG01-4413

FLATTERING
FIT



BG01-4327

FLATTERING
FIT



NEW

BG01-4411

FLATTERING
FIT



WATERPROOF

NEW

BG01-4410

REGULAR
FIT



BG01-4258

FLATTERING
FIT



MEN'S ENDURANCE JACKETS

- 100% bonded Polyester shell with micro-fleece backing
- Three exterior zippered pockets
- Adjustable bottom hem
- Open cuff
- Adjustable hood

BG01-3855 | Men's | Charcoal Mix/Red | S-XL

BG01-3863 | Men's | Charcoal Mix/Silver | M-3XL



THE TEAM LOOK...PERFECTED.

MEN'S & LADIES PIVOT JACKETS

- 94% Polyester/6% Spandex
- Unlined shell fabric
- Water-repellant finish
- Two lower exterior zippered pockets

BG01-4322 | Men's
Black | M-3XL

BG01-4376 | Ladies
Black | S-2XL



FLEECE

THE TEAM LOOK...PERFECTED.

MEN'S & LADIES PRO 1/4 ZIP FLEECE

- 100% Polyester
- 7 oz.
- Anti-pill
- Stand collar
- Self fabric cuffs & hem
- Two lower zippered pockets
- YKK® center front zipper

BG02-4874 | Men's | Black/Red | S-4XL

BG02-4915 | Ladies | Black/Charcoal | S-3XL

BG02-4914 | Men's | Black/Charcoal | S-4XL

BG02-4951 | Ladies | Black/Red | XS-3XL

PRO

CLEAN. CRISP.
PROFESSIONAL.

BG02-4914

REGULAR
FIT

BG02-4951

FLATTERING
FIT

S-4XL

XS-3XL



BG02-4874

REGULAR
FIT

BG02-4915

FLATTERING
FIT

LADIES HARPER 1/2 ZIP PULLOVER

- 58% Cotton/25% Polyester/17% Lyocell
- 10.5 oz. breathable, soft brushed back fleece
- Ribbing with Spandex on front chest & side panels
- Ribbed cuff & hem
- Kangaroo pocket with zippers
- YKK® center front zipper

BG02-5008 | Ladies
Rose | XS-2XL

BG02-5008

RELAXED
FLATTERING FIT



REFINED
RELAXATION

ALPHA FULL ZIP FLEECE

- 60% Cotton/40% Polyester
- 10 oz. pre-shrunk brushed fleece
- Kangaroo pocket
- Ribbed cuffs and waistband with Spandex

BG02-4846 | Men's
Black/Grey | M-2XL

BG02-4846

REGULAR
FIT

EXTRA LAYER
FOR COMFORT



FULLY LINED WITH
WAFFLE KNIT!



LADIES CONVERGE FULL ZIP FLEECE

- 60% Cotton/40% Polyester
- 9.9 oz. pre-shrunk, terry fleece
- Thumbhole at cuffs

BG02-4879 | Ladies
Tropical Sea Green | XS-2XL

BG02-4880 | Ladies
Cherry Fizz | XS-M

BG02-4879

FLATTERING
FIT

COZY
& CHIC



BG02-4880

FLATTERING
FIT



LADIES & MEN'S WEEKENDER MICRO-FLEECE FULL ZIPS

- 100% Polyester micro-fleece
- Anti-pill
- Stand collar
- Elastic binding on cuff
- Two hidden zippered side pockets
- Drop tail

BG02-4876 | Ladies | Sonic Purple | S-3XL

BG02-4772 | Ladies | Coral | S-2XL

BG02-4773 | Men's | Black | M-3XL

BG02-4875 | Ladies | Sonic Berry | S-L, 3XL



BG02-4876

FLATTERING
FIT



BG02-4772

FLATTERING
FIT



BG02-4773

REGULAR
FIT



BG02-4875

FLATTERING
FIT

MEN'S SHIFTER FLEECE

- 80% Polyester/15% Rayon/5% Cotton
- Mid-weight 8.25 oz. pre-shrunk fleece
- Double layer hood with scuba collar
- Kangaroo pockets
- Sport cuff
- YKK Metaluxe® center front zipper

BG02-4090 | Men's
Grey | S-M, XL-3XL

BG02-4090

REGULAR
FIT



BG02-4959

UNISEX
FIT



GREGORY OVERSHIRT FLEECE

- 100% Polyester stretch fabric
- Shirt collar
- Snap-up center front closure
- Two chest pockets with snap closure
- Adjustable cuffs

BG02-4959 | Unisex
Cream/Tan/Black | XS-3XL



UNISEX FIT

ULTRA SOFT FEEL

MEN'S & LADIES DRIFT FLEECE

- 65% Polyester/30% Rayon/5% Elastane
- Mid-weight fleece
- Anti-pill
- Two lower front zippered pockets

BG02-4598 | Men's | Full Zip
Charcoal | S-3XL

BG02-4599 | Ladies | 1/4 Zip
Charcoal | XS-2XL



BG02-4598

REGULAR
FIT

FULL ZIP

BG02-4599

FLATTERING
FIT

1/4 ZIP

MEN'S & LADIES ACE FULL ZIP HOODIES

- 85% Polyester/15% Elastane
- Soft, high performance fabric
- Moisture wicking
- Self fabric cuffs & bottom hem
- Kangaroo pockets

BG02-4769 | Men's
Black | S-3XL

BG02-4770 | Men's
Grey Mélange | S-3XL

BG02-4767 | Ladies
Black | XS-2XL

BG02-4769

REGULAR
FIT



GREAT
EVERYDAY
WEAR

BG02-4770

REGULAR
FIT



BG02-4767

FLATTERING
FIT



MEN'S & LADIES TEXTURED PULLOVER HOODIES

- 75% Polyester/20% Rayon/5% Spandex 12 oz. textured knit fabric
- Self fabric cuffs & hem
- Raglan sleeves
- Two lower zippered pockets
- YKK® zipper quality

BG02-5003 | Men's
Carbon Heather | S-3XL

BG02-5004 | Ladies
Carbon Heather | S-2XL

NEW

BG02-5003

REGULAR
FIT

NEW

BG02-5004

FLATTERING
FIT

EXCEPTIONAL COMFORT
THAT GOES ANYWHERE



FABRIC DETAIL

NEW

BG02-5013

UNISEX
FIT

RIFT PULLOVER HOODIES

- 60% Cotton/40% Polyester
- 12.3 oz. pre-shrunk, brushed fleece
- Ribbed cuffs & waistband
- Kangaroo pocket
- One interior, zippered mesh, security pocket
- Thick, heavy-duty drawstrings

BG02-5013 | Unisex
Black/Red | S-3XL

BG02-5023 | Unisex
Black/Sport Grey | S-3XL



UNISEX

NEW

BG02-5023

UNISEX
FIT

DRIVEN BY COMFORT,
FUELED BY STYLE



ZIPPERED SECURITY POCKET

LADIES & MEN'S LATITUDE LIGHTWEIGHT PULLOVER FLEECE

- 51% Cotton/49% Polyester
- 9 oz. pre-shrunk, French terry
- Ribbed cuffs & waistband
- Kangaroo pocket
- Heavy duty, flat drawstrings

B602-5020 | Ladies
Grey Heather/Pink | XS-2XL

B602-5019 | Men's
Grey Heather/Black | S-3XL

NEW

B602-5019

REGULAR
FIT

NEW

B602-5020

FLATTERING
FIT



**PREMIUM
TERRY FLEECE**

FLEECE

25

UNISEX MOTION PULLOVER HOODIES

- 60% Cotton/40% Polyester
- Brushed fleece
- 12.3 oz. pre-shrunk fleece
- Ribbed cuffs & waistband
- Kangaroo pocket
- Thick, heavy-duty drawstrings

BG02-5031 | Unisex | Lavender | XS-2XL

BG02-5032 | Unisex | Steel Blue | XS-3XL

BG02-5030 | Unisex | Pastel Pink | XS-2XL

BG02-4888 | Unisex | Black/Checkers | XS-3XL

BG02-4712 | Unisex | Orange | XS, M-3XL

BG02-4662 | Unisex | Tough Tan | XS-M

BG02-4931 | Unisex | Military Green | XS-3XL

BG02-4661 | Unisex | Charcoal | XS-3XL

BG02-4718 | Unisex | Ice Blue | XS-3XL

BG02-4933 | Unisex | Sport Grey | XS-2XL

BG02-4659 | Unisex | Cardinal Red | XS, M-3XL

BG02-4660 | Unisex | Black | XS-3XL

BG02-4720 | Unisex | Blush | S-2XL

BG02-4827 | Unisex | Coral | XS-S, L-3XL

BG02-4789 | Kid's/Youth
Black | XS (4-5), S (6-7), M (8-9), L (10-11)

BG02-4791 | Kid's/Youth
Blush | S (6-7), M (8-9)

BG02-4830 | Kid's/Youth
Coral | XS (4-5), S (6-7), M (8-9)

NEW

BG02-5031

UNISEX
FIT



NEW

BG02-5032

UNISEX
FIT



NEW

BG02-5030

UNISEX
FIT



BG02-4898

UNISEX
FIT



BG02-4712

UNISEX
FIT



BG02-4662

UNISEX
FIT



BG02-4931

UNISEX
FIT



BG02-4661

UNISEX
FIT



BG02-4718

UNISEX
FIT



BG02-4933

UNISEX
FIT



BG02-4659

UNISEX
FIT



BG02-4660

UNISEX
FIT



BG02-4720

UNISEX
FIT



BG02-4827

UNISEX
FIT



MATCHING
ADULT/YOUTH

MATCHING
ADULT/YOUTH



UNISEX

BG02-4799

KID'S/YOUTH
FIT



BG02-4791

KID'S/YOUTH
FIT



BG02-4830

KID'S/YOUTH
FIT



LADIES & MEN'S SHIELD VARSITY FLEECE

- MADE IN CANADA
- 95% Cotton/5% Polyester
- 15 oz. pullover fleece
- Two tone double layered contrast hood with drawstrings
- Rib cuff and hem with Lycra®
- Pouch pocket

BG02-4609 | Ladies
Charcoal Mix/Black/Purple Mix | S-2XL

BG02-4568 | Men's
Charcoal Mix/Black/Red | S-3XL



BG02-4568

REGULAR
FIT

BG02-4609

FLATTERING
FIT



LADIES PLUSH 1/2 SNAP MICRO-FLEECE

- 100% Polyester micro-fleece
- 10.5 oz
- Anti-pill
- Stand collar
- Two side pockets with hidden zippers
- Snap closure

BG02-4953 | Ladies
Holly Berry | S-2XL

BG02-4953

RELAXED
FLATTERING FIT

BG02-4955

REGULAR
FIT

SUBTLE 2.0 1/4 ZIP PULLOVER FLEECE

- 90% Polyester/10% Elastane
- 9.5 oz. buffed extraordinarily soft fleece
- Dyed to match tipped plastic zipper pull
- Self-fabric cuff & hem

BG02-4955 | Men's
Charcoal | M-2XL

STYLISH AND
COMFORTABLE

LUXURY YOU
CAN FEEL!



MEN'S SHADE 1/2 ZIP FLEECE

- 100% Polyester bonded fabric
- Anti-pill
- 1/2 zip
- Kangaroo pocket
- Large zippered security pocket
- Knit cuffs & waistband for superior comfort

BG02-4455 | Men's
Black/Charcoal/Red | M-3XL

BG02-4455

RELAXED
FIT



BG02-4545

REGULAR
FIT



GEARED FULL ZIP FLEECE

- 100% Polyester fabric
- Lightweight, full zip fleece
- Reflective center front zipper
- Anti-pill
- Sport collar
- Two lower reflective zippered pockets
- One zippered upper chest pocket
- Two interior mesh pockets

BG02-4545 | Men's
Black/Charcoal/Red | S-3XL

SHIRTS

OIL CAN L/S SHIRTS

- 100% pre-shrunk Cotton
- 7.1 oz.
- Button-up front
- Two chest pockets with button closure
- Adjustable cuffs
- Sleeve roll-up tab & button
- Shoulder epaulettes

BG02-4566 | Men's
Charcoal/Red | S-2XL

BG02-4538 | Men's
Charcoal/Silver | S-3XL

BG02-4539 | Men's
Charcoal/Blue | S-3XL



BG02-4566

REGULAR
FIT



BG02-4538

REGULAR
FIT



BG02-4539

REGULAR
FIT

WORK &
FASHION

SHIRTS

PLAID ESSENTIAL S/S DRESS SHIRTS

- Pre-shrunk 100% Cotton
- One chest pocket with flap & button closure
- One chest pocket with simple button closure
- Chambray trimmed inner collar, cuff & inside placket

BG03-2089 | Men's
Grey/Black/Blue | S-2XL

BG03-2087 | Men's
Grey/Black/Red | M-3XL

BG03-2087

REGULAR
FIT

BG03-2089

REGULAR
FIT



RED CONTRAST
STITCHING



BLUE CONTRAST
STITCHING

UNISEX BOX PLAID L/S FLANNEL SHIRT

- 100% pre-shrunk Cotton with 2-side brushing
- 4.9 oz.
- Button-up front
- Two chest pockets with button closure
- Adjustable cuffs
- Collar stays

BG02-4729 | Unisex
Orange/Grey/Black | XS-3XL



UNISEX

BG02-4729

REGULAR
FIT



KID'S FINE LINE PLAID L/S FLANNEL SHIRT

- 100% pre-shrunk Cotton with 2-side brushing
- 4.9 oz.
- Button-up front
- Two chest pockets with button closure
- Adjustable cuffs
- Collar stays

BG02-4726 | Kid's/Youth
Black/Grey/Red
XS (4-5), S (6-7), M (8-9),
L (10-11), XL (12-13)

BG02-4726

KID'S/YOUTH
FIT



WORKFORCE SHORT SLEEVE SHIRTS

- 65% Polyester/35% Cotton
- 5.47 oz.
- Anti-wrinkle
- Pen pocket built into left chest pocket
- Two asymmetrical chest pockets with button closure

BG03-4027 | Men's
Grey | S-4XL

BG03-4026 | Men's
Black | S-4XL



ANTI-WRINKLE

BG03-4026

REGULAR
FIT

S-4XL

MEN'S TRIUMPH BRISTOL S/S SHIRT

- 65% Polyester/35% Cotton
- 4.5 oz.
- Stain resistant

BG03-1957 | Men's
White | S-3XL

BG03-1957

REGULAR
FIT

BG03-4027

REGULAR
FIT



WORKFORCE LONG SLEEVE SHIRTS

- 65% Polyester/35% Cotton
- 5.47 oz.
- Anti-wrinkle
- Two asymmetrical chest pockets with button closure

BG02-4643 | Men's
Grey | S-4XL

BG02-4642 | Men's
Black | M-4XL



ANTI-WRINKLE

BG02-4642

REGULAR
FIT

M-4XL

BG02-4643

REGULAR
FIT

S-4XL



MEN'S FAIRWAY JACKET

- 90% Polyester/10% Spandex
- Double brushed performance fabric
- Two lowered zippered pockets

BG01-4251 | Men's
Navy | M-2XL

ANTIGUA.



FABRIC DETAIL



BG01-4251

REGULAR
FIT

MODERN
STYLING

ELITE FULL ZIP FLEECE BY EGO

- 95% Polyester/5% Spandex full zip
- Contrast inner collar
- YKK® center front contrast zipper

BG02-3928 | Men's
Navy/Silver | S-3XL

BG02-3927 | Men's
Black/Silver | L-2XL



BG02-3928

REGULAR
FIT



BG02-3927

REGULAR
FIT



POLOS

H7
HOLESEVEN
CLASSICS

LADIES & MEN'S H7 JASPER POLOS

- 87% Polyester/13% Spandex
- Subtle striped melange fabric
- Self fabric collar

BG03-3965 | Men's
Silver | S-M, XL-3XL

BG03-3987 | Ladies
Silver | S-2XL

BG03-3963 | Men's
Dark Cyan | M, XL-3XL

BG03-3965

REGULAR
FIT



FABRIC DETAIL

BG03-3987

FLATTERING
FIT



FABRIC DETAIL

BG03-3963

REGULAR
FIT



MEN'S & LADIES COOL TECH POLOS

- 87% Polyester/13% Elastane "cool-down" fabric
- Custom produced, multifunctional fiber has rapid heat dissipation, instant cooling & air permeability
- Self fabric collar
- Interlock knit
- Wick-away

BG03-3991 | Men's
Black | S-3XL

BG03-3992 | Ladies
Black | S-2XL

BG03-3991

REGULAR
FIT



BG03-3992

FLATTERING
FIT



LADIES & MEN'S CORE POLOS

- 100% Polyester pique
- 4.1 oz.
- Moisture wicking
- Antimicrobial

B603-1926 | Ladies
Black | XS-2XL

B603-1925 | Men's
Black | S-3XL

BG03-1926

FLATTERING
FIT



BG03-1925

REGULAR
FIT

ASK ABOUT
OTHER COLOUR
OPTIONS



BG03-1938

FLATTERING
FIT

LADIES ANTIGUA INSPIRE POLO

- 100% Polyester with Desert Dry™
- Moisture wicking
- Embossed subtle diamond pattern
- Self fabric collar

B603-1938 | Ladies
Black | M-2XL



FABRIC
DETAIL

ANTIGUA.



MEN'S & LADIES FLICKER 2.0 POLOS

- 88% Polyester/12% Spandex
- 6 oz.
- Self fabric collar & cuffs
- Side vents
- H7 logo reflective print on wearers right sleeve

BG03-5076 | Men's
Orange Heather | S-3XL

BG03-5018 | Men's
Grey Heather | S-3XL

BG03-5019 | Men's
Black Heather | S-3XL

BG03-5078 | Ladies
Smoky Mauve Heather | S-2XL

BG03-5077 | Men's
Smoky Mauve Heather | S-3XL

NEW

BG03-5076

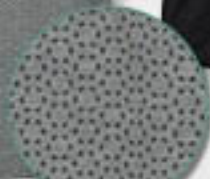
REGULAR
FIT



FABRIC DETAIL

BG03-5018

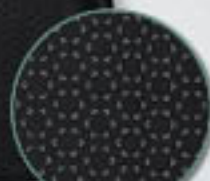
REGULAR
FIT



FABRIC DETAIL

BG03-5019

REGULAR
FIT



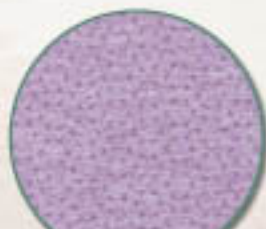
FABRIC DETAIL

H7
HOLESEVEN
CLASSICS

NEW

BG03-5078

FLATTERING
FIT



FABRIC DETAIL

NEW

BG03-5077

REGULAR
FIT



**SOPHISTICATED
FASHION**

MEN'S & LADIES PERFECT POLOS

- 62% Polyester/22% Nylon/16% Rayon
- Melange with subtle horizontal stripes
- Three button placket with Silicone buttons
- Back neck dart for a perfect fit

- BG03-4081** | Men's | White Melange | S-3XL
BG03-4088 | Ladies | White Melange | S-2XL
BG03-4082 | Ladies | Lilac Melange | S-L
BG03-5086 | Men's | Light Blue Melange | S-3XL
BG03-5087 | Ladies | Light Blue Melange | S-2XL

*The
Perfect
Polo*



**TAILORED
FIT!**

VELCRO[®] BACK

ESSENTIAL BLACKOUT PROMO CAP

FB07-5267
Black
Adjustable



REGULAR PROFILE MESH CAP

8607-2609
Black/White
Adjustable



SHEEN MESH CAP

FB07-5173
Black/White
Adjustable



BOX STRETCH CAP

FB07-5215
Royal Blue
Adjustable



PRESTIGE CAP

FB07-5189
Grey/Black/Red
Adjustable



HI VIS REFLECTIVE CAP

FB07-5247
Flourescent Yellow/Silver
Adjustable



RACING CAP

FB07-5220
Black/Red/Grey
Adjustable



RACING CAP

FB07-5221
Black/Blue/Grey
Adjustable



VICTORY LANE CAP

FB07-5188
Black/White/Red
Adjustable



WOVEN CAMO LINE ACCENTS MESH CAP

8607-2589
White/Black
Adjustable



MÉLANGE CAP

FB07-5258
Black/Grey Mélange/White
Adjustable



MÉLANGE CAP

FB07-5260
Black/Grey Mélange/Red
Adjustable



VELCRO® BACK

CAMO PROMO CAP

FB07-1075
Black/Blackwoods Camo
Adjustable



GHOST CAMO MESH CAP

BG07-6322
Black
Adjustable



SNAP BACK

MACH MESH CAP

FB07-5294
Black/Red
Adjustable



NEW

MACH MESH CAP

FB07-5298
Black/Chevronal
Adjustable



NEW

TWO-TONE CHECKER RACING MESH CAP

FB07-5287
Black/Black
Adjustable



NEW

DUO-TONE ROPE CAP

FB07-5269
Beige/Black
Adjustable



DUO-TONE ROPE CAP

FB07-5270
Beige/Orange
Adjustable



DUO-TONE ROPE CAP

FB07-5271
Beige/Blue
Adjustable



DUO-TONE ROPE CAP

FB07-5268
Beige/Red
Adjustable



SNAP BACK

PIVOT TRUCKER MESH CAP

FB07-5274

Heather Grey/Black/Tan
Adjustable



DISTRESSED RUGGED MESH CAP

FB07-5275

Charcoal/Beige
Adjustable



WORKSHOP MESH CAP

FB07-5277

Tan/Black
Adjustable



CHECKER SPEED MESH CAP

FB07-5261

Black/Red/White
Adjustable



CHECKER SPEED MESH CAP

FB07-5262

Black/Blue/White
Adjustable



CHECKER SPEED MESH CAP

FB07-5264

Black/Silver/White
Adjustable



CHECKER & STRIPE MESH CAP

FB07-5265

Black/White
Adjustable



MODERN RACE MESH CAP

FB07-5266

Black/White/Red
Adjustable



SNAP BACK

TRI-TONE MESH SNAP CAP

FB07-5299
Black/White/Red

NEW



HERITAGE 2.0 CAP

FB07-5303
Black/Charcoal
Adjustable

NEW



BLACKOUT CAP

FB07-5304
Black
Adjustable

NEW



TRUCKER MESH CAP

FB07-5204
Black/White
Adjustable



TRUCKER MESH CAP

FB07-5203
Black/Black
Adjustable



TRUCKER MÉLANGE MESH CAP

FB07-5217
Grey/White
Adjustable



DIGITAL PATTERN LIGHTWEIGHT CAP

FB07-5251
Black/Charcoal



LIGHTWEIGHT DIGITAL CAP

FB07-5252
Black/Red



TRUCKER MESH CAP

FB07-5205
Charcoal/Black
Adjustable



FLAT PEAK

JERSEY FLAT PEAK CAP

FB07-5255

Black/Grey Mélange
Adjustable



JERSEY FLAT PEAK CAP

FB07-5254

Charcoal Mélange/Black
Adjustable



FLAT PEAK CAP

FB07-5165

Black/Black
Adjustable



FLAT PEAK CAP

BG07-2555

Black/Orange
Adjustable



FLAT PEAK STRETCH CAP

BG07-6319

Black
Adjustable



FLAT PEAK STRETCH CAP

BG07-6318

Black



FULL BACK

BLACKOUT CAP

FB07-5305

Black

NEW



MÉLANGE CAP

FB07-5257

Charcoal/Black



BOX STRETCH CAP

FB07-5256

Charcoal



MODERN STRETCH TWILL CAP

FB07-5228

Black



LADIES

TROPICAL MESH CAP

FB07-5300
Black/Silver/Teal
Snap Back

NEW



TROPICAL MESH CAP

FB07-5301
Black/Silver/Rose Wine
Snap Back

NEW



TROPICAL MESH CAP

FB07-5302
Black/Silver/Purple
Snap Back

NEW



MACH MESH CAP

FB07-5295
Black/Pink
Snap Back

NEW



BLACKOUT CAP

FB07-5278
Black
Snap Back



SUMMER CAP

FB07-5276
Teal/White
Velcro® Back

BREATHABLE



HERITAGE CAMO CAP

FB07-5186
Grey/Pink
Velcro® Back



CAMO CAP

FB07-5206
Camo/Grey/Pink
Velcro® Back



WOVEN CAMO CAP

FB07-5182
Black/Pink
Velcro® Back



FABRIC
DETAIL



ENZYME WASHED PILLBOX CAP

FB07-5175
Charcoal/Rose Gold
Velcro® Back



MÉLANGE CONTRAST STITCH MESH CAP

FB07-5201
Grey/White/Purple
Velcro® Back



LACE CAP

FB07-5187
Black
Velcro® Back



FABRIC
DETAIL



LADIES

SMOOTHIE CAP

FB07-5253
Lavender/Charcoal
Velcro® Back



SMOOTHIE CAP

FB07-5224
Purple/Charcoal
Velcro® Back



SMOOTHIE CAP

FB07-5225
Teal/Charcoal
Velcro® Back



SMOOTHIE CAP

FB07-5226
Coral/Charcoal
Velcro® Back



SMOOTHIE CAP

FB07-5223
Pink/Charcoal
Velcro® Back



TIE DYE CRISS CROSS MESH CAP

8607-2611
Peach/Blue/White
Velcro® Criss-
Cross Back



WOVEN CAMO CAP

FB07-5230
Charcoal/Purple
Snap Back



MÉLANGE POLY FLEX CAP

8607-2591
Pink
Snap Back



SPORT DRAW STRING CAP

FB07-5238
Vary Berry
Drawstring Back



YOUTH/LADIES

WORN DENIM STRETCH CAP

FB07-5244

Light Purple/White
Snap Back



STRETCH

WORN DENIM STRETCH CAP

FB07-5245

Aqua/White
Snap Back



STRETCH

MÉLANGE CAP

FB07-5168

Blue Mélange/Black
Velcro® Back



WOVEN MESH CAP

FB07-5219

Orange/White
Snap Back



WOVEN WASHED MESH CAP

FB07-5193

Blue/Grey/White
Snap Back



MÉLANGE CAP

FB07-5163

Blue Mélange/Black
Velcro® Back



WOVEN WASHED MESH CAP

FB07-5232

Charcoal/Grey/Lime Green
Snap Back



WOVEN WASHED MESH CAP

FB07-5233

Charcoal/White/Red
Snap Back



WOVEN WASHED MESH CAP

FB07-5191

Dark Grey/White
Snap Back



WOVEN WASHED MESH CAP

FB07-5246

Dark Grey/White/Blue
Snap Back



WOVEN MESH CAP

FB07-5218

Pink/Grey/White
Snap Back



WOVEN WASHED MESH CAP

FB07-5194

Mulberry/Grey/White
Snap Back



YOUTH

WOVEN MESH CAP

FB07-5239
Lilac/Grey/White
Snap Back



WOVEN MESH CAP

FB07-5240
Coral/Grey/White
Snap Back



TRI-TONE MESH CAP

FB07-5309
White/Black/Red
Snap Back

NEW



TRI-TONE MESH CAP

FB07-5308
White/Black/Aqua
Snap Back

NEW



TRI-TONE MESH CAP

FB07-5307
White/Black/Light Blue
Snap Back

NEW



TRI-TONE MESH CAP

FB07-5306
White/Black/Dusty Rose
Snap Back

NEW



HERITAGE JR. CAP

FB07-5292
Black/Charcoal
Snap Back

NEW



FLAT PEAK CAP

8607-2556
Black
Snap Back



TODDLER

MIDNIGHT CAMO CAP

FB07-5290
Camo/Charcoal/Black
Velcro® Back

NEW



DIGITAL CAMO CAP

FB07-5273
Camo/Charcoal/Black
Snap Back



DRINKWARE

ELEVATE TRAVEL MUGS

• Vacuum sealed • Double-wall Stainless Steel • Screw top lid with flip top

BG09-8312 | Fuchsia | 18 oz. BG09-8313 | Lime | 18 oz. BG09-8127 | Midnight Charcoal | 18 oz.

BG09-8310 | White | 18 oz. BG09-8314 | Orange | 18 oz. BG09-7898 | Black | 18 oz.



LOFT TRAVEL MUGS

• Vacuum sealed • Double-wall Stainless Steel
• Textured paint for superior durability
• Clear Tritan® push on lid

BG09-8331
Checked | 20 oz.

BG09-3014
Checked | 21 oz.

BG09-8175
Black | 21 oz.



ROAST ROADIE TUMBLER MUGS

- Triple insulated • Vacuum sealed
- Keurig® compatible • Double-wall Stainless Steel

BG09-8201 | Lemon | 17 oz.

BG09-8097 | Lilac | 17 oz.



KEURIG®
COMPATIBLE



17oz

BG09-8201



17oz

BG09-8097

COMMUTER MUGS

- Triple insulated • Vacuum sealed
- Push & sip screw on lid • Keurig® compatible
- Double-wall Stainless Steel

BG09-8320 | Pink | 12 oz.

BG09-8321 | Lilac | 12 oz.

BG09-8322 | Black | 12 oz.

12oz



NEW

BG09-8322

12oz



NEW

BG09-8321

12oz



NEW

BG09-8320

RETAIL
PACKAGING



HUDDY TUMBLERS

- Twist off lid
- Slider opening with straw
- Fits in most vehicle cup holders
- Vacuum-sealed
- Double-wall Stainless Steel

BG09-8318

Military | 30 oz.

BG09-8319

Iridescent Mint | 30 oz.

BG09-8154

Tough Tan/Black | 30 oz.

BG09-8084

Black/Grey | 30 oz.

BG09-8184

Red/Black | 30 oz.



TWIST AND SIP



TWIST AND SIP



TWIST AND SIP



30oz

NEW

BG09-8318



30oz

NEW

BG09-8319



30oz

BG09-8154



30oz

BG09-8084



30oz

BG09-8184



TWIST AND SIP



TWIST AND SIP

TRIPLE INSULATED

MAX LEAKPROOF TUMBLERS

- Leakproof
- Triple insulated
- Vacuum sealed
- Double-wall Stainless Steel
- Tritan® Lid
- Powder coating

BG09-8186
Charcoal Grey | 40 oz.

BG09-8188
Heirloom Rose | 40 oz.



VOYAGE WATER BOTTLE

- Double-wall Stainless Steel construction for enhanced insulation
- Keeps liquids warm or cold for hours
- Vacuum sealed
- Bottle lid with handle for easy grab and go

BG09-4496
Blossy Rose | 17 Oz.



UNWIND TUMBLER 2 PK

- Vacuum sealed
- Double-wall Stainless Steel
- Sweat proof BPA Free
- Great for on the go activities
- Tritan® lid
- Keeps beverages cold/hot for hours

BG09-8140
Black/Iridescent Peaches | 12 oz.



ROAM COOLER 2 PK

- Bottle opener feature
- Vacuum sealed
- BPA Free
- Double-walled Stainless Steel
- Powder coating finish
- Sweat proof
- Holds 341 ml glass bottle or 355 ml can

BG09-8016 | Black/Raspberry | 12 oz.



FORTRESS TUMBLERS

- Vacuum sealed
- Double-wall Stainless Steel
- Solid swivel handle
- Screw on lid
- Flip & Sip

BG09-8328
Sorbet | 30 oz.

BG09-8329
Black | 30 oz.

BG09-8237
Sonic Slush | 30 oz.



30oz

NEW

BG09-8328



30oz

NEW

BG09-8329



30oz

NEW

BG09-8237

NIAGARA NEON WATER BOTTLE KIT - 4 PK

- Vacuum sealed
 - Double-wall Stainless Steel
 - Screw on lid
 - Includes: 1x Yellow, 1x Purple, 1x Green, 1x Orange
- BG09-8309** | 24 oz.



24oz



24oz

NEW

BG09-8309



24oz



BG09-7944



BG09-7943



BG09-7945

GOLF UMBRELLAS

- Automatic push button opening & closure
- Velcro® tie closure & comfortable foam handle
- Wind proof
- Lightning safe
- Can be digitally printed
- 30" Wide Canopy

BG09-7944 | Black/Red

BG09-7943 | Black/Charcoal

BG09-7945 | Black/Blue

ACCESSORIES

COMMUTER BACKPACKS

- Durable Polyester shell
- Soft-grip top handle
- Laptop sleeve with Velcro®
- Waterproof storage compartment
- Organizer mesh compartment
- Comfort-padded, adjustable straps
- Four secure zip compartments
- Two water bottle pockets
- Hidden padded back security pocket

BG09-8239

Black/Red | 19" x 14" x 10"

BG09-8240

Black/Silver | 19" x 14" x 10"



DRIVE BACKPACK

- Nylon shell
- Padded & adjustable shoulder straps
- Three zippered compartments
- Two generous side pockets for water bottles

BG09-7968

Black | 18 1/2" H x 13" W x 7 1/2" D



TRAILMATE COOLER BAGS

- Easy wipe waterproof interior
- Separate top compartment has zippered access & mesh divider
- Two mesh pockets
- Zippered main compartment
- Adjustable shoulder strap
- Grab handle
- YKK® zippers

BG09-8246

Black/Blue | 11" L x 7" W x 9" H



VOYAGER DUFFLE BAG

- Durable dobby fabric
- Zipper access to main compartment
- One zippered, breathable shoe storage pocket
- One exterior mesh pocket
- Two zippered front pockets
- Interior mesh zippered pocket

BG09-4569

Black/Grey/Purple | 23" W x 12" H x 13" D



BG09-4569

ALGONQUIN DUFFLE BAG

- Durable, water-resistant Polyester shell • 45-liter capacity • YKK® zipper used for main compartment
- Includes built in, vented shoe bag • Waterproof zippered compartment to keep wet items separate
- Front exterior zippered pocket • Two padded handles with Velcro® closure
- Adjustable, padded shoulder strap • 23" L x 12" W x 13" H

BG09-8223 | Black/White



BG09-8223



**WATERPROOF
COMPARTMENT**



SHOE POCKET

ALGONQUIN COOLER BAGS

- Water resistant exterior
- Lightweight closed cell insulation
- Holds 6 cans
- 11" L X 9" W X 5 1/2" D

BG09-7975 | Black/Red

BG09-7977 | Black/Silver

BG09-7979 | Charcoal/Pink



BG09-7975



BG09-7977



BG09-7979

**DON'T SEE WHAT YOU NEED?
LET'S TALK!**

We couldn't possibly include all the things
we can do for you, so if you don't see it...
JUST ASK! ☎ 1-800-383-4940

FAST EDDIE®

AUTHENTIC APPAREL >>>

March 2026

Fast Eddie Authentic Apparel, 19 Anderson Blvd. Uxbridge, Ontario, L9P-0C7

Tel: 1-800-383-4940 • (905) 642-1010

Fax: 1-800-830-2460 • (905) 642-1011

Items may differ slightly in colour and design due to availability and/or unforeseen manufacturing requirements and restrictions.

Fast Eddie reserves the right, subject to notice to Buyer, to adjust published prices to reflect changes in global cost structures that affect the overall cost of merchandise.